



# FIDDYMENT F-6C1

ROSEVILLE, CA  
AUGUST 18, 2021

# Exhibit D



PLAN 1621 MISSION

PLAN 1832 FARMHOUSE

PLAN 1762 CRAFTSMAN

372.173 Isles(Fiddymnt F-6C1)  
Roseville, CA  
August 18, 2021

**Express**  
HOMES  
a D.R. Horton Company

2260 DOUGLAS BLVD. SUITE 110  
ROSEVILLE, CA 95661  
916.297.4461

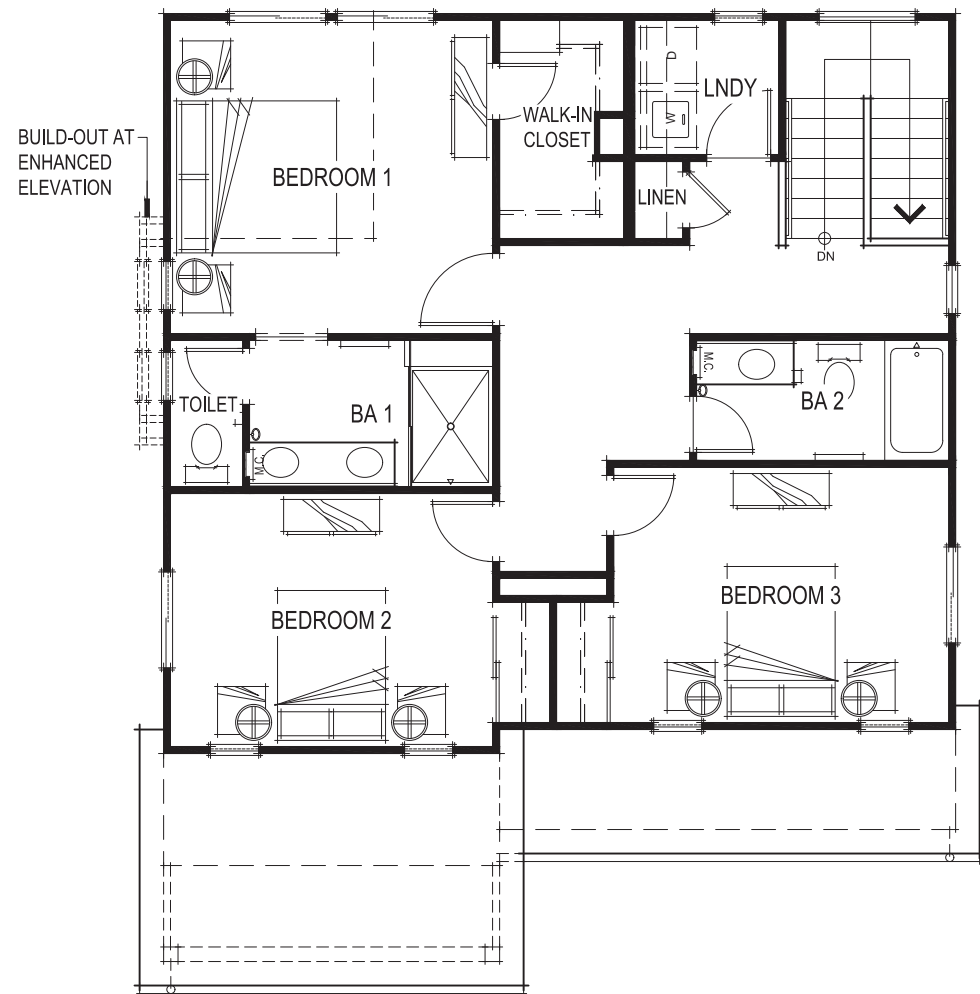
Home and community information, including pricing, included features, terms, availability and amenities, are subject to change at any time without notice or obligation. Drawings, renderings, square footages, floor plans, elevations, features, colors and sizes are approximate and for illustration purposes only and will vary from the homes as built. Not all features available in all plans. Options and upgrades are available at an additional cost and are subject to construction cut-off dates. See sales agent for complete details. D.R. Horton CA2, Inc.: CalBRE License #01239752; Contractor's License #750190.

CONCEPTUAL STREETSCAPE  
01

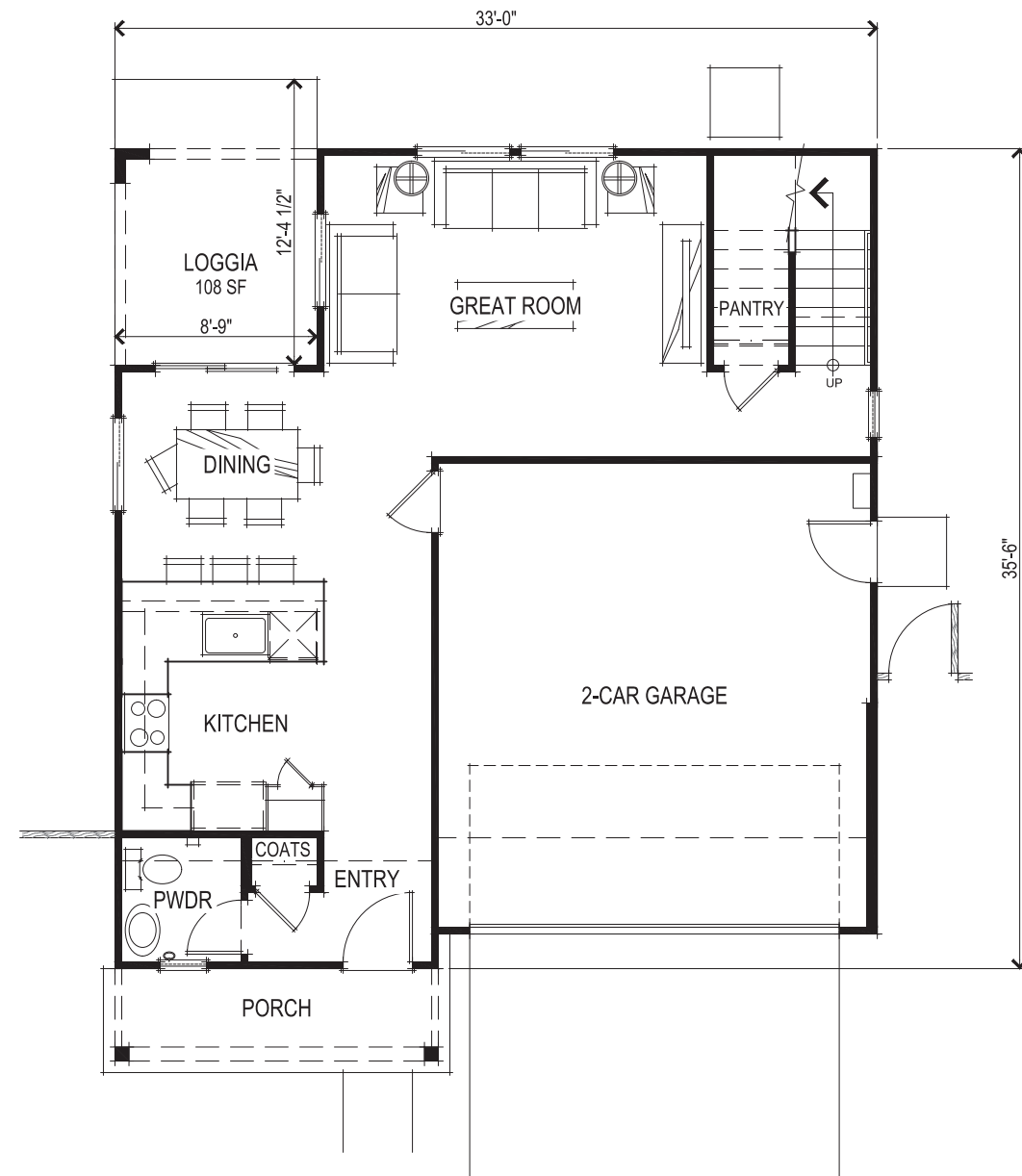
SDG Architects, Inc.  
3361 Walnut Blvd, Suite 120  
Brentwood, CA 94513  
925.634.7000 | sdgarchitectinc.com



# Exhibit D



SECOND FLOOR PLAN



FIRST FLOOR PLAN

SQUARE FOOTAGES	
FIRST FLOOR	674 SQ. FT.
SECOND FLOOR	947 SQ. FT.
TOTAL LIVING	1621 SQ. FT.
2-CAR GARAGE	387 SQ. FT.



1621-01

372.173 Isles(Fiddyment F-6C1)  
Roseville, CA  
August 18, 2021

# Exhibit D



- CONC. VILLA TILE ROOFING
- DECORATIVE TILE VENT
- CEMENT PLASTER FINISH

MISSION FRONT ELEVATION



- 1x3 BATTS w/ SMOOTH HARDIE PANEL
- CONC. FLAT TILE ROOFING
- ILLUMINATED ADDRESS, TYP.
- EXTERIOR LIGHT LOCATION, TYP.
- CEMENT PLASTER FINISH

FARMHOUSE FRONT ELEVATION



- CEDARMILL HARDIE LAP SIDING
- CONC. FLAT TILE ROOFING
- CEMENT PLASTER FINISH
- STONE VENEER

CRAFTSMAN FRONT ELEVATION

372.173 Isles(Fiddyment F-6C1)  
 Roseville, CA  
 August 18, 2021



2260 DOUGLAS BLVD. SUITE 110  
 ROSEVILLE, CA 95661  
 916.297.4461

Home and community information, including pricing, included features, terms, availability and amenities, are subject to change at any time without notice or obligation. Drawings, renderings, square footages, floor plans, elevations, features, colors and sizes are approximate and for illustration purposes only and will vary from the homes as built. Not all features available in all plans. Options and upgrades are available at an additional cost and are subject to construction cut-off dates. See sales agent for complete details. D.R. Horton CA2, Inc.: CalBRE License #01239752; Contractor's License #750190.



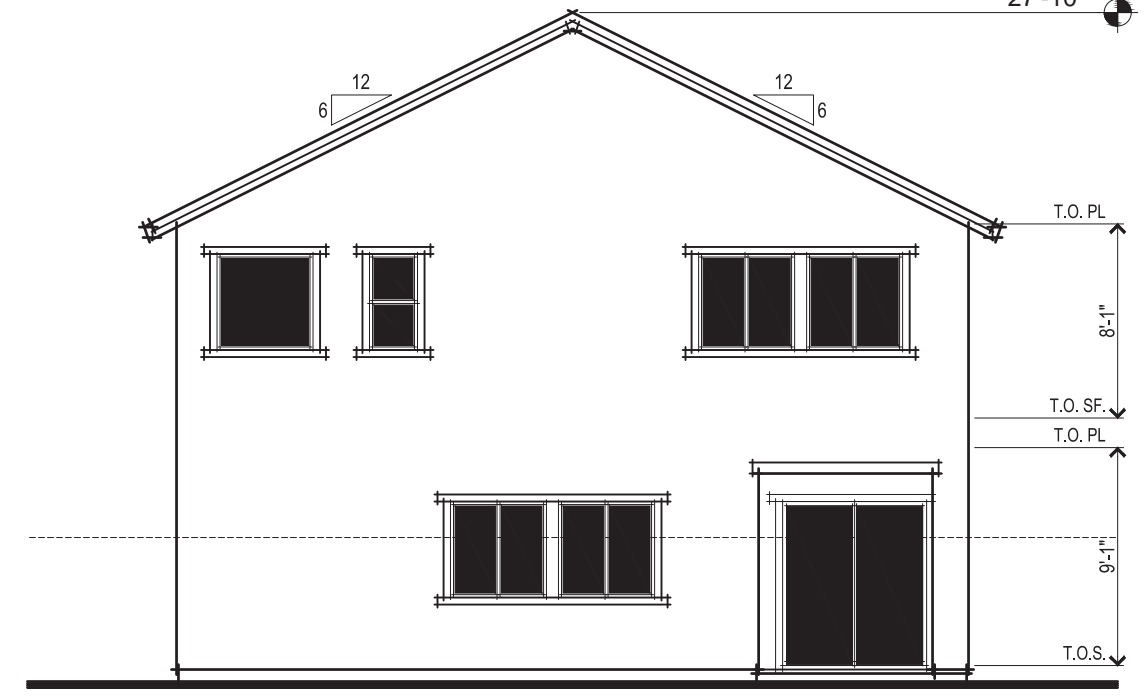
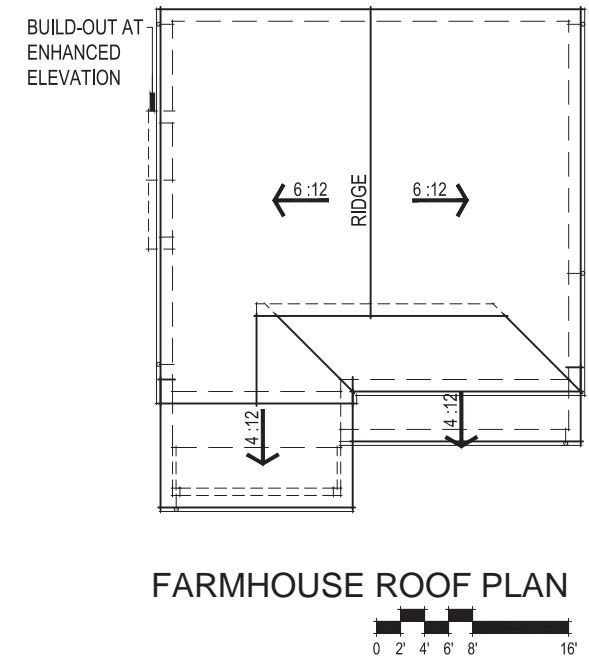
FRONT ELEVATIONS  
 1621-02

SDG Architects, Inc.  
 3361 Walnut Blvd, Suite 120  
 Brentwood, CA 94513  
 925.634.7000 | sdgarchitectinc.com

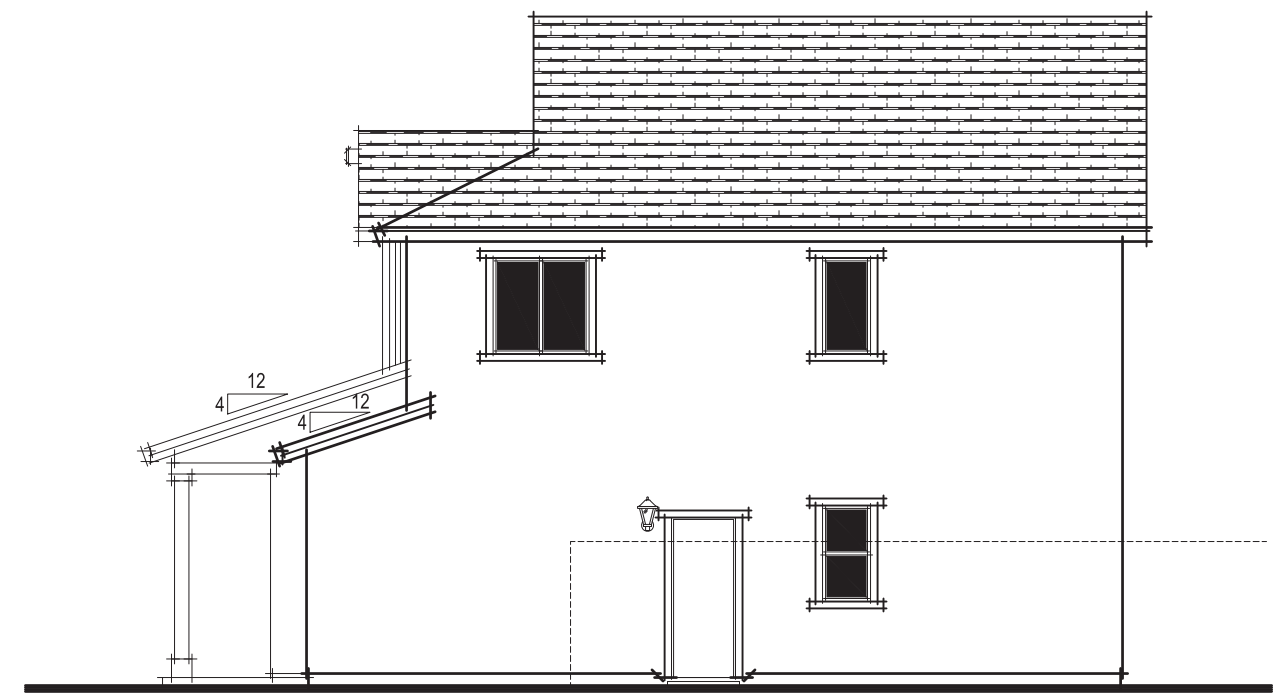


# Exhibit D

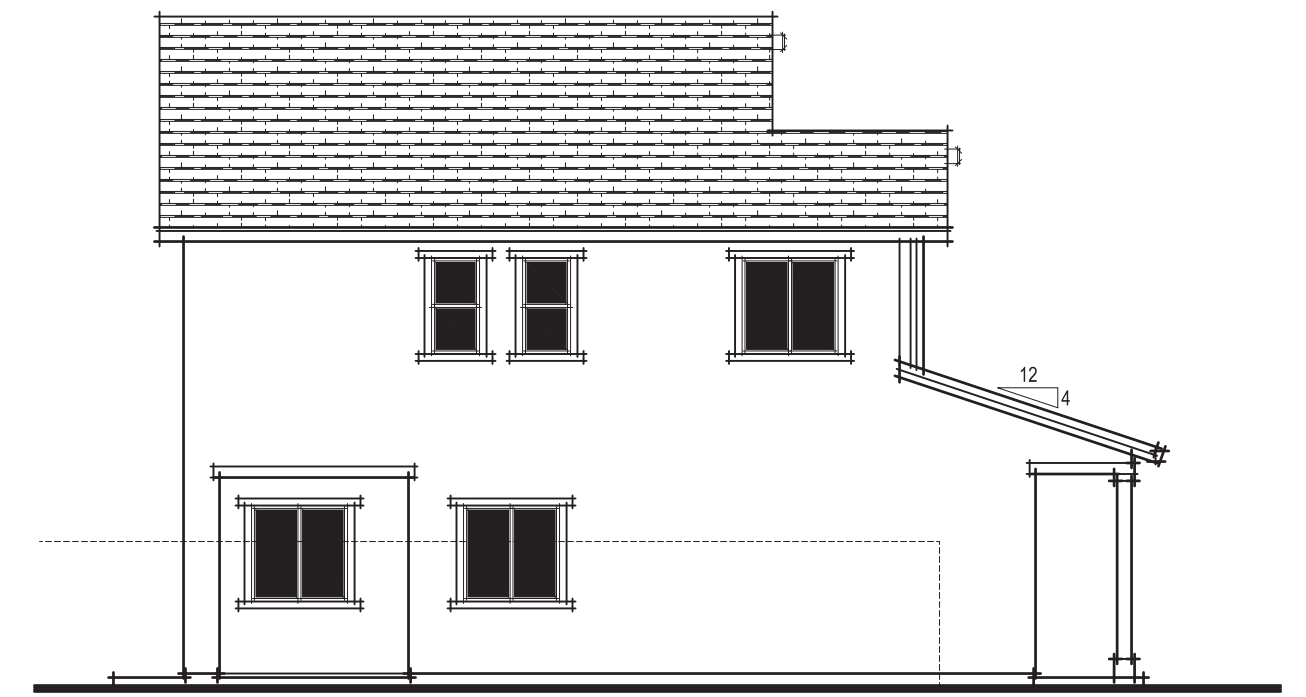
27'-10"



FARMHOUSE REAR ELEVATION



FARMHOUSE RIGHT ELEVATION



FARMHOUSE LEFT ELEVATION



FARMHOUSE ELEVATIONS  
1621-03

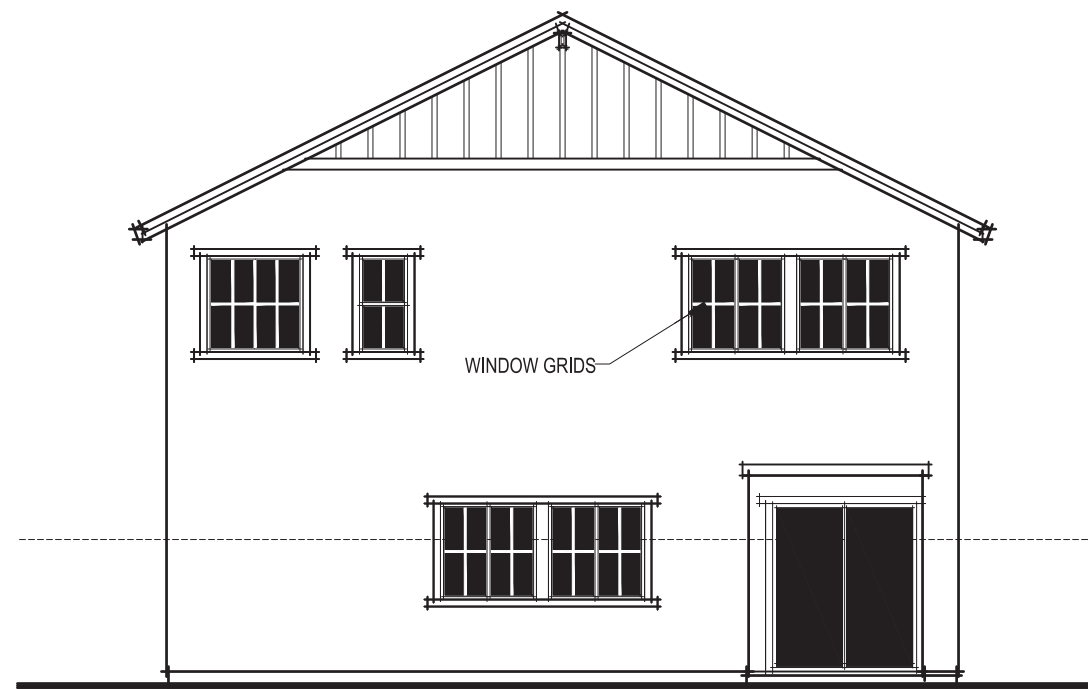
372.173 Isles (Fiddymont F-6C1)  
Roseville, CA  
August 18, 2021



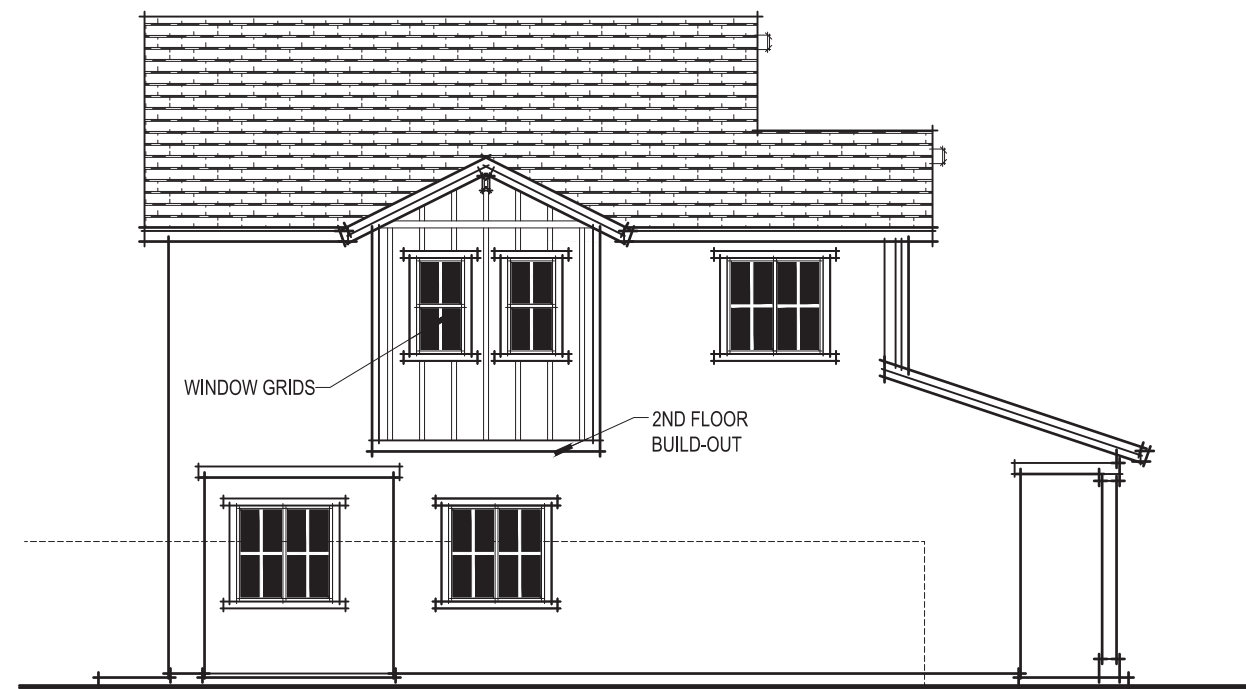
Home and community information, including pricing, included features, terms, availability and amenities, are subject to change at any time without notice or obligation. Drawings, renderings, square footages, floor plans, elevations, features, colors and sizes are approximate and for illustration purposes only and will vary from the homes as built. Not all features available in all plans. Options and upgrades are available at an additional cost and are subject to construction cut-off dates. See sales agent for complete details. D.R. Horton CA2, Inc.: CalBRE License #01239752; Contractor's License #750190.



# Exhibit D



FARMHOUSE ENHANCED REAR ELEVATION



FARMHOUSE ENHANCED LEFT ELEVATION

FARMHOUSE ENHANCED ELEVATIONS

1621-03E

372.173 Isles(Fiddyment F-6C1)

Roseville, CA  
August 18, 2021



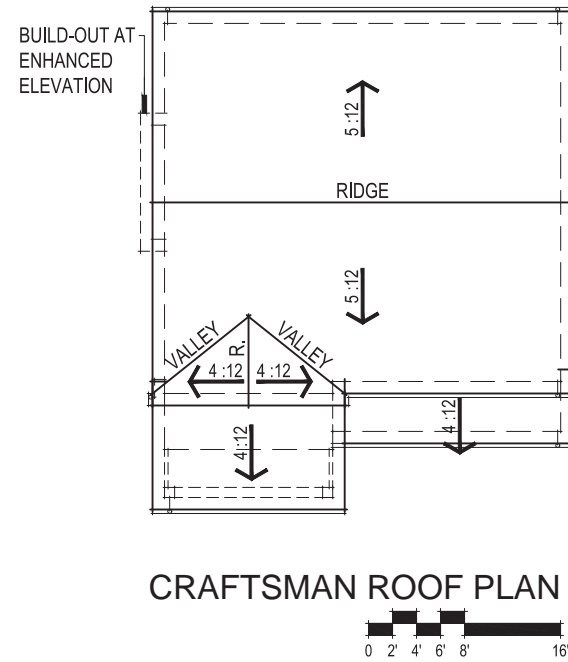
2260 DOUGLAS BLVD. SUITE 110  
ROSEVILLE, CA 95661  
916.297.4461

Home and community information, including pricing, included features, terms, availability and amenities, are subject to change at any time without notice or obligation. Drawings, renderings, square footages, floor plans, elevations, features, colors and sizes are approximate and for illustration purposes only and will vary from the homes as built. Not all features available in all plans. Options and upgrades are available at an additional cost and are subject to construction cut-off dates. See sales agent for complete details. D.R. Horton CA2, Inc.: CalBRE License #01239752; Contractor's License #750190.

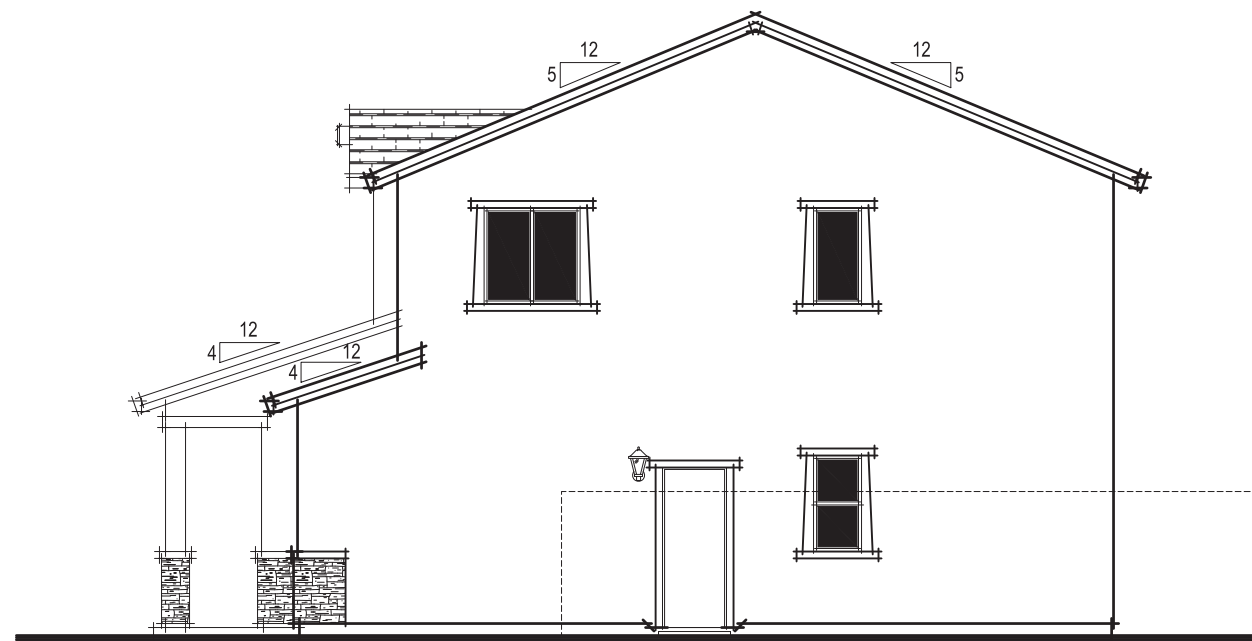
SDG Architects, Inc.  
3361 Walnut Blvd, Suite 120  
Brentwood, CA 94513  
925.634.7000 | sdgarchitectinc.com



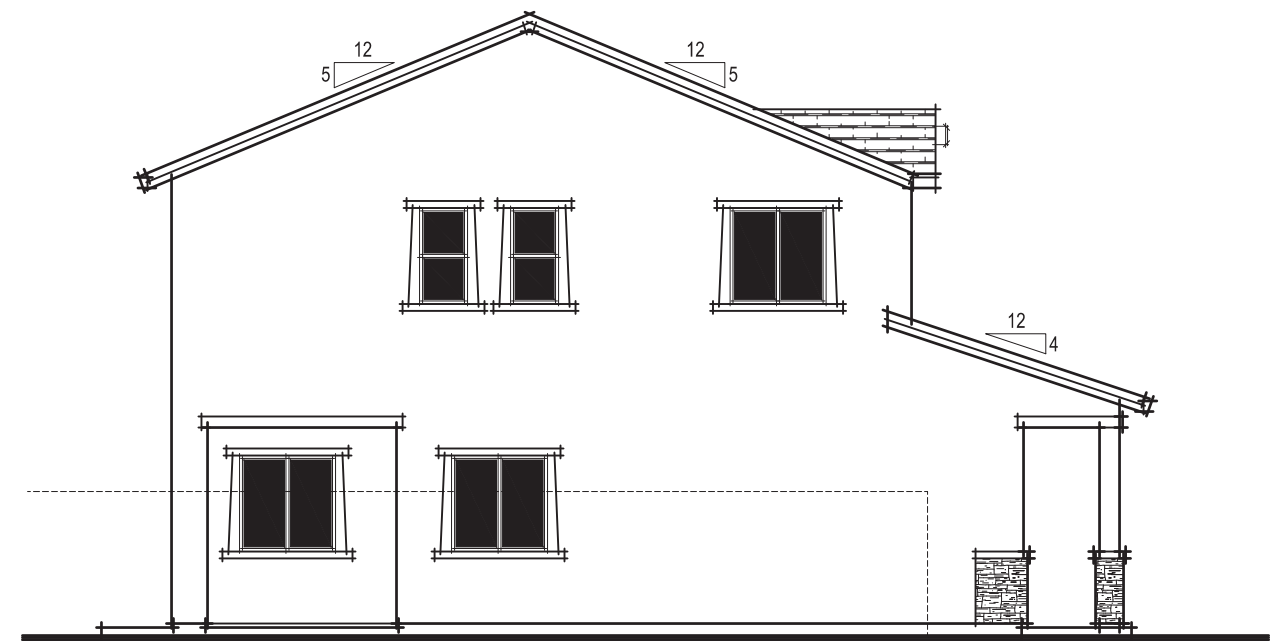
# Exhibit D



CRAFTSMAN REAR ELEVATION



CRAFTSMAN RIGHT ELEVATION



CRAFTSMAN LEFT ELEVATION

372.173 Isles (Fiddymont F-6C1)  
 Roseville, CA  
 August 18, 2021

**Express**  
 HOMES  
 a D.R. Horton Company

2260 DOUGLAS BLVD. SUITE 110  
 ROSEVILLE, CA 95661  
 916.297.4461

Home and community information, including pricing, included features, terms, availability and amenities, are subject to change at any time without notice or obligation. Drawings, renderings, square footages, floor plans, elevations, features, colors and sizes are approximate and for illustration purposes only and will vary from the homes as built. Not all features available in all plans. Options and upgrades are available at an additional cost and are subject to construction cut-off dates. See sales agent for complete details. D.R. Horton CA2, Inc.: CalBRE License #01239752; Contractor's License #750190.

0 1' 2' 3' 4' 8'

CRAFTSMAN ELEVATIONS  
 1621-04

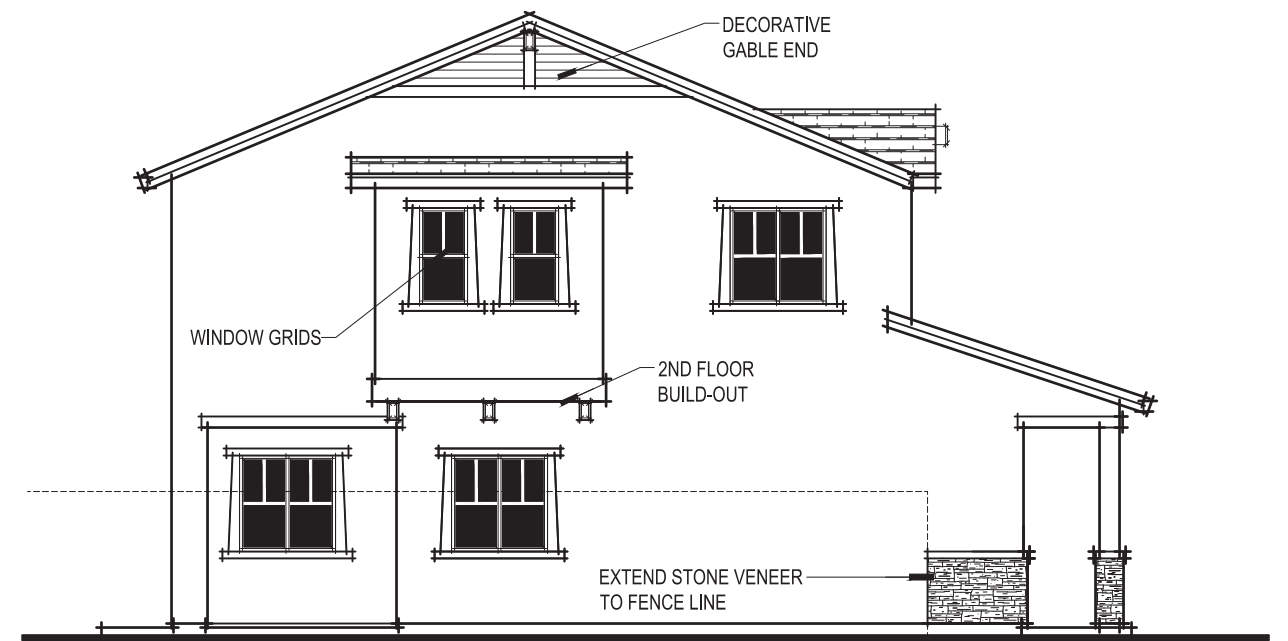
**SDG Architects, Inc.**  
 3361 Walnut Blvd. Suite 120  
 Brentwood, CA 94513  
 925.634.7000 | sdgarchitectinc.com

**SDG**  
 architects

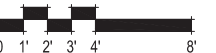
# Exhibit D



CRAFTSMAN ENHANCED REAR ELEVATION



CRAFTSMAN ENHANCED LEFT ELEVATION



CRAFTSMAN ENHANCED ELEVATIONS

1621-04E

372.173 Isles(Fiddymnt F-6C1)

Roseville, CA  
August 18, 2021



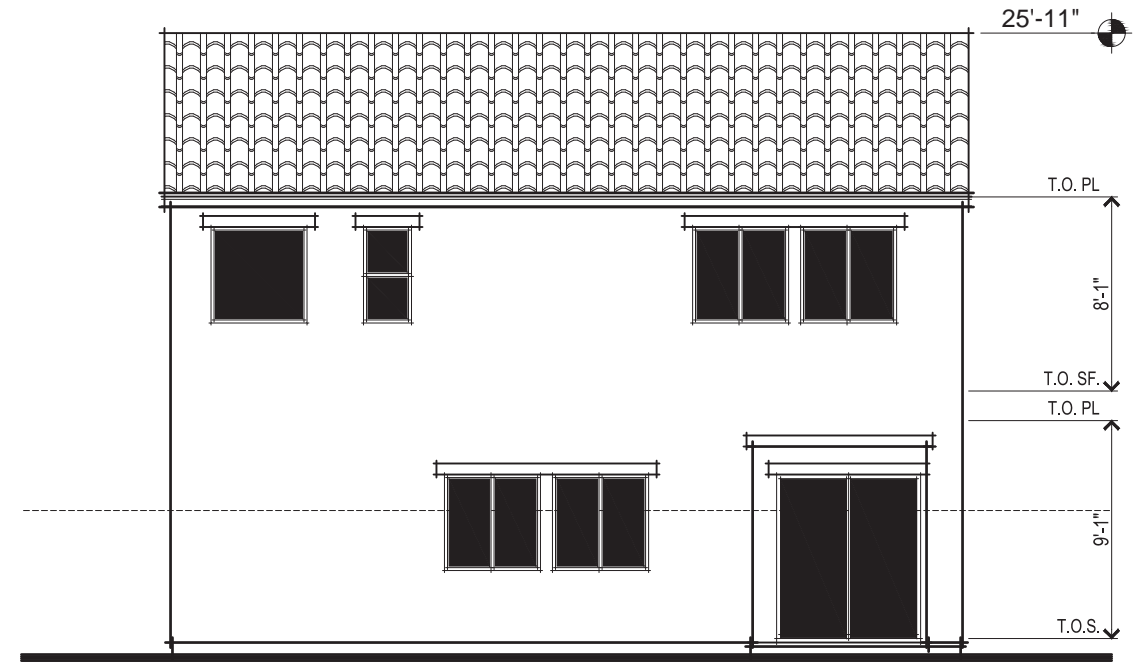
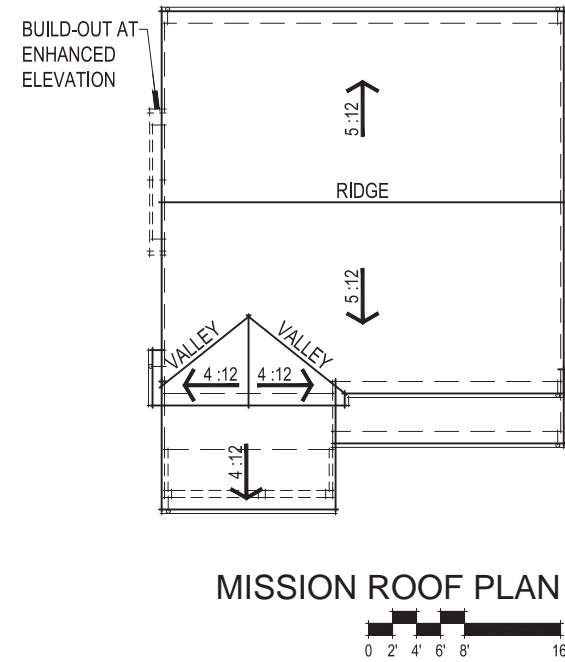
2260 DOUGLAS BLVD. SUITE 110  
ROSEVILLE, CA 95661  
916.297.4461

Home and community information, including pricing, included features, terms, availability and amenities, are subject to change at any time without notice or obligation. Drawings, renderings, square footages, floor plans, elevations, features, colors and sizes are approximate and for illustration purposes only and will vary from the homes as built. Not all features available in all plans. Options and upgrades are available at an additional cost and are subject to construction cut-off dates. See sales agent for complete details. D.R. Horton CA2, Inc.: CalBRE License #01239752; Contractor's License #750190.

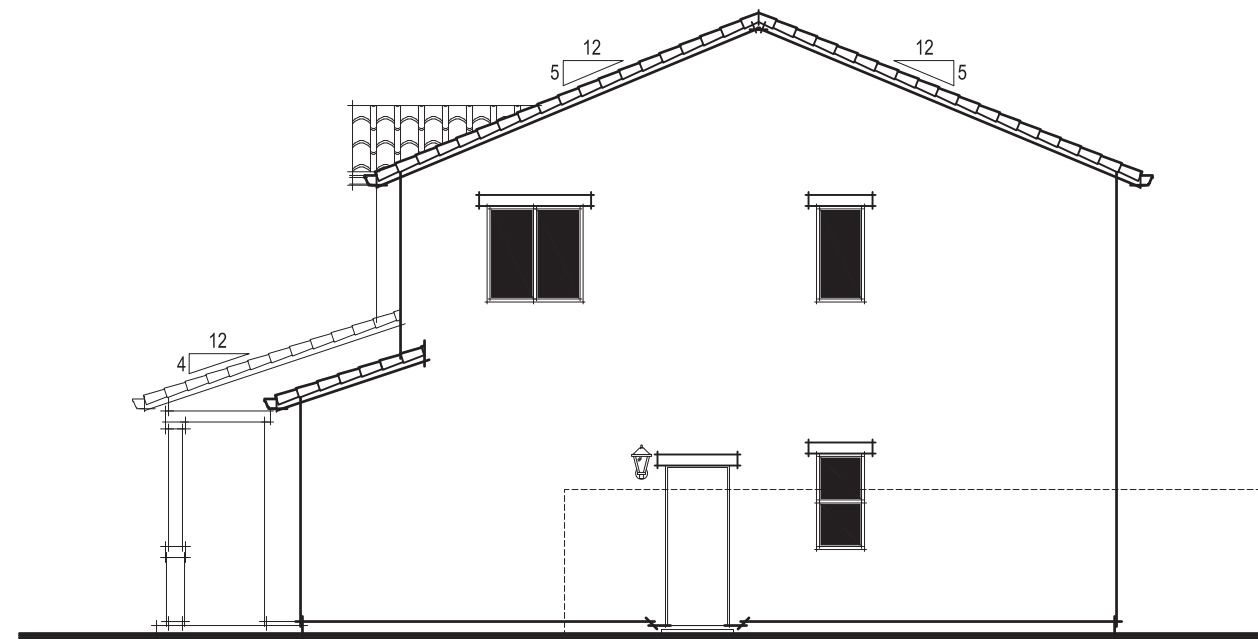
SDG Architects, Inc.  
3361 Walnut Blvd, Suite 120  
Brentwood, CA 94513  
925.634.7000 | sdgarchitectinc.com



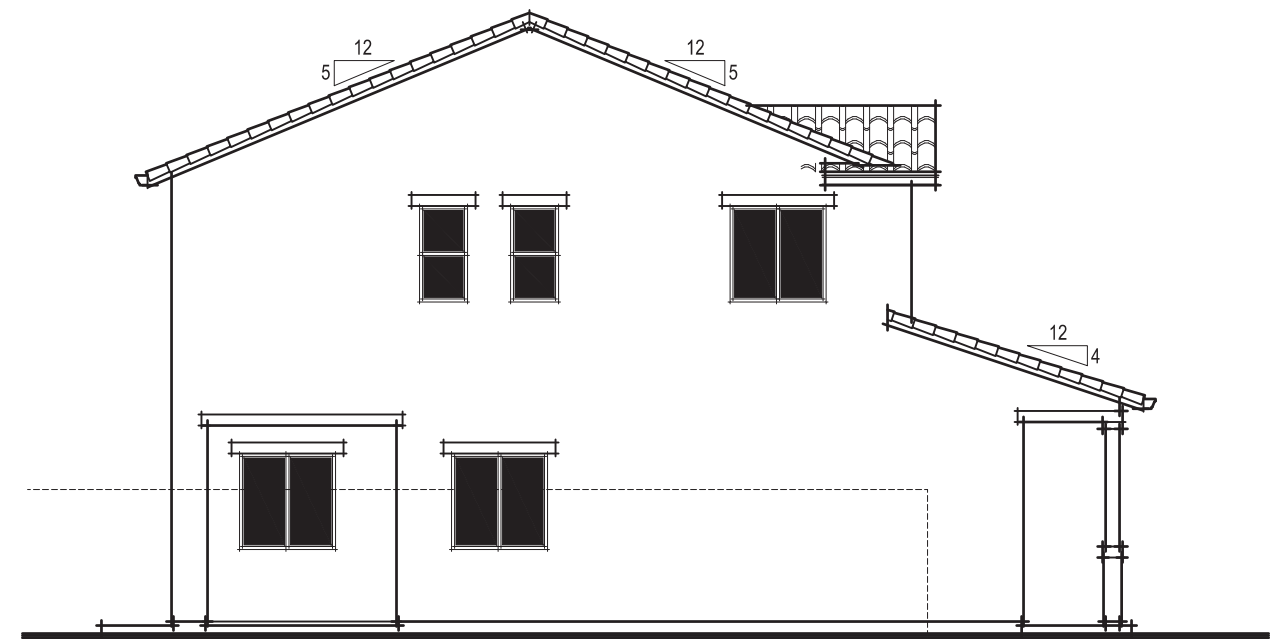
# Exhibit D



MISSION REAR ELEVATION



MISSION RIGHT ELEVATION



MISSION LEFT ELEVATION

372.173 Isles (Fiddymet F-6C1)  
 Roseville, CA  
 August 18, 2021

**Express**  
 HOMES  
 a D.R. Horton Company

2260 DOUGLAS BLVD. SUITE 110  
 ROSEVILLE, CA 95661  
 916.297.4461

Home and community information, including pricing, included features, terms, availability and amenities, are subject to change at any time without notice or obligation. Drawings, renderings, square footages, floor plans, elevations, features, colors and sizes are approximate and for illustration purposes only and will vary from the homes as built. Not all features available in all plans. Options and upgrades are available at an additional cost and are subject to construction cut-off dates. See sales agent for complete details. D.R. Horton CA2, Inc.: CalBRE License #01239752; Contractor's License #750190.

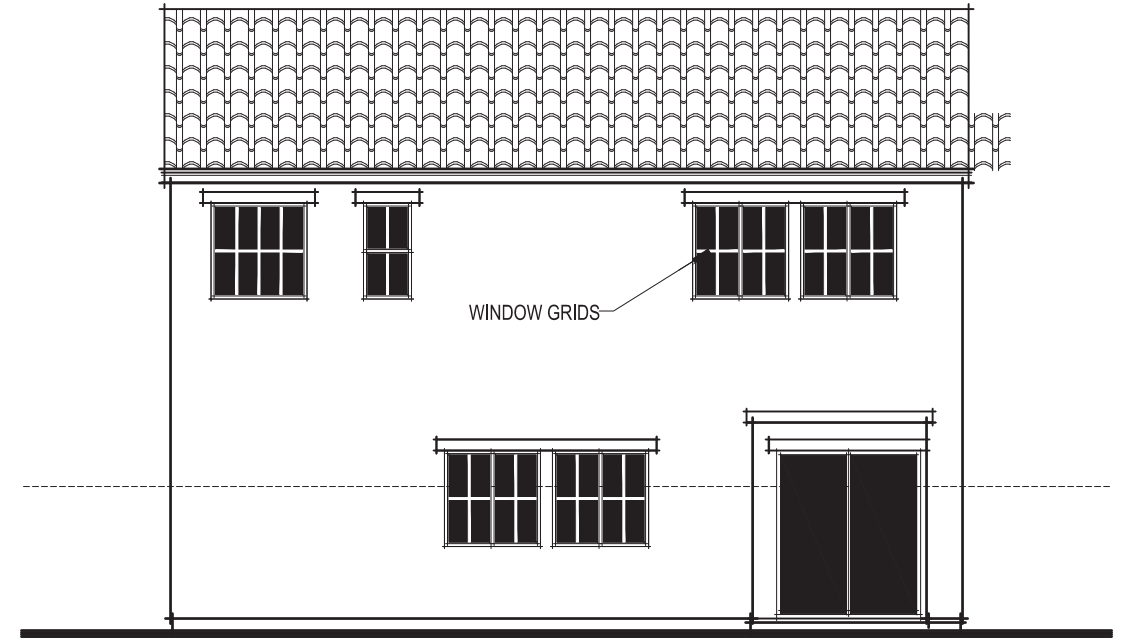
MISSION ELEVATIONS  
 1621-05

0 1' 2' 3' 4' 8'

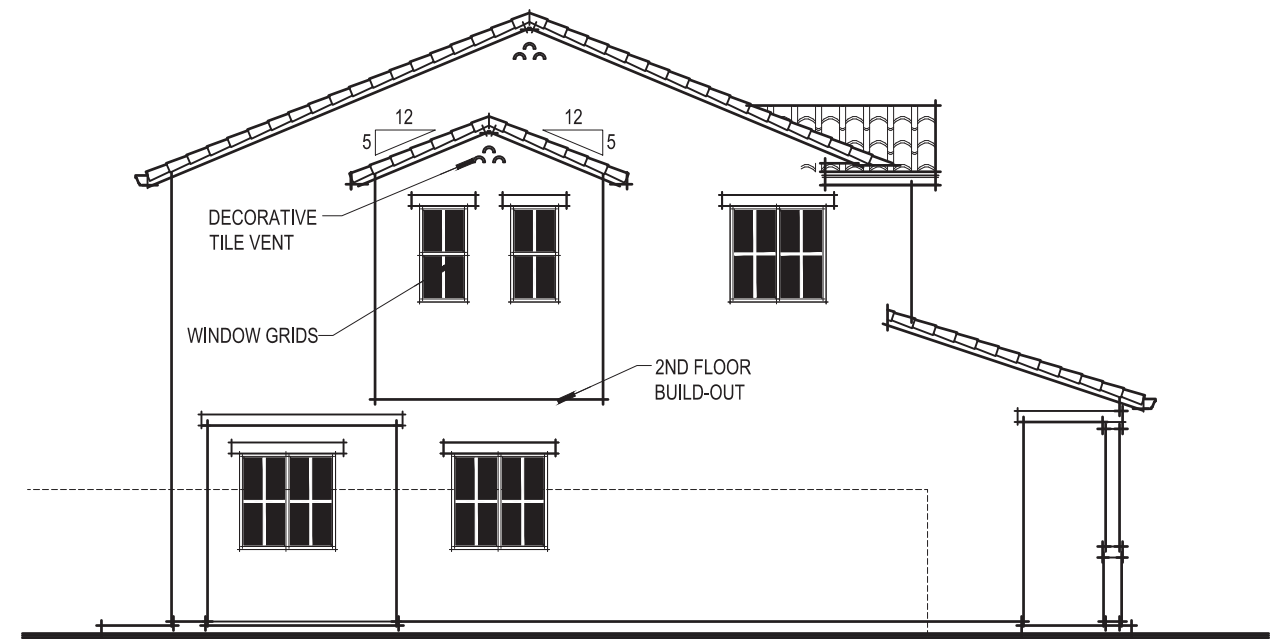
SDG Architects, Inc.  
 3361 Walnut Blvd, Suite 120  
 Brentwood, CA 94513  
 925.634.7000 | sdgarchitectinc.com

SDG  
 architects

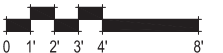
# Exhibit D



MISSION ENHANCED REAR ELEVATION



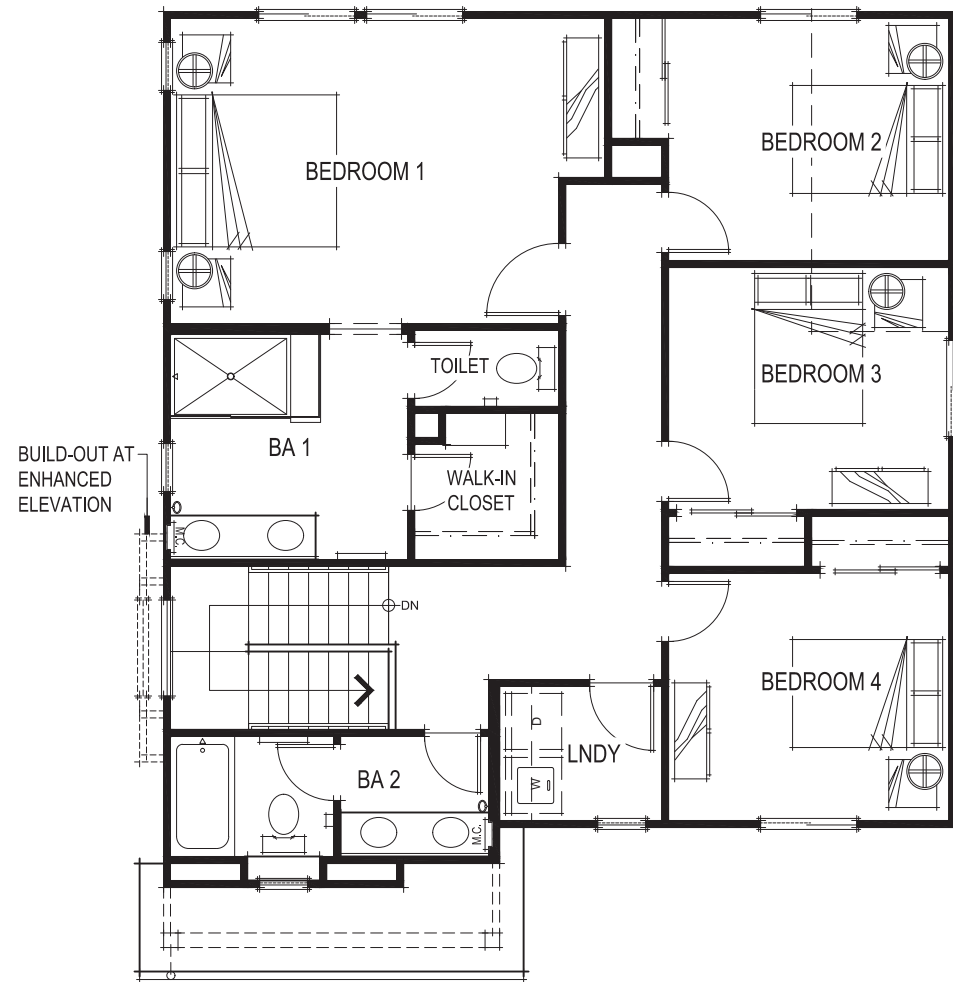
MISSION ENHANCED LEFT ELEVATION



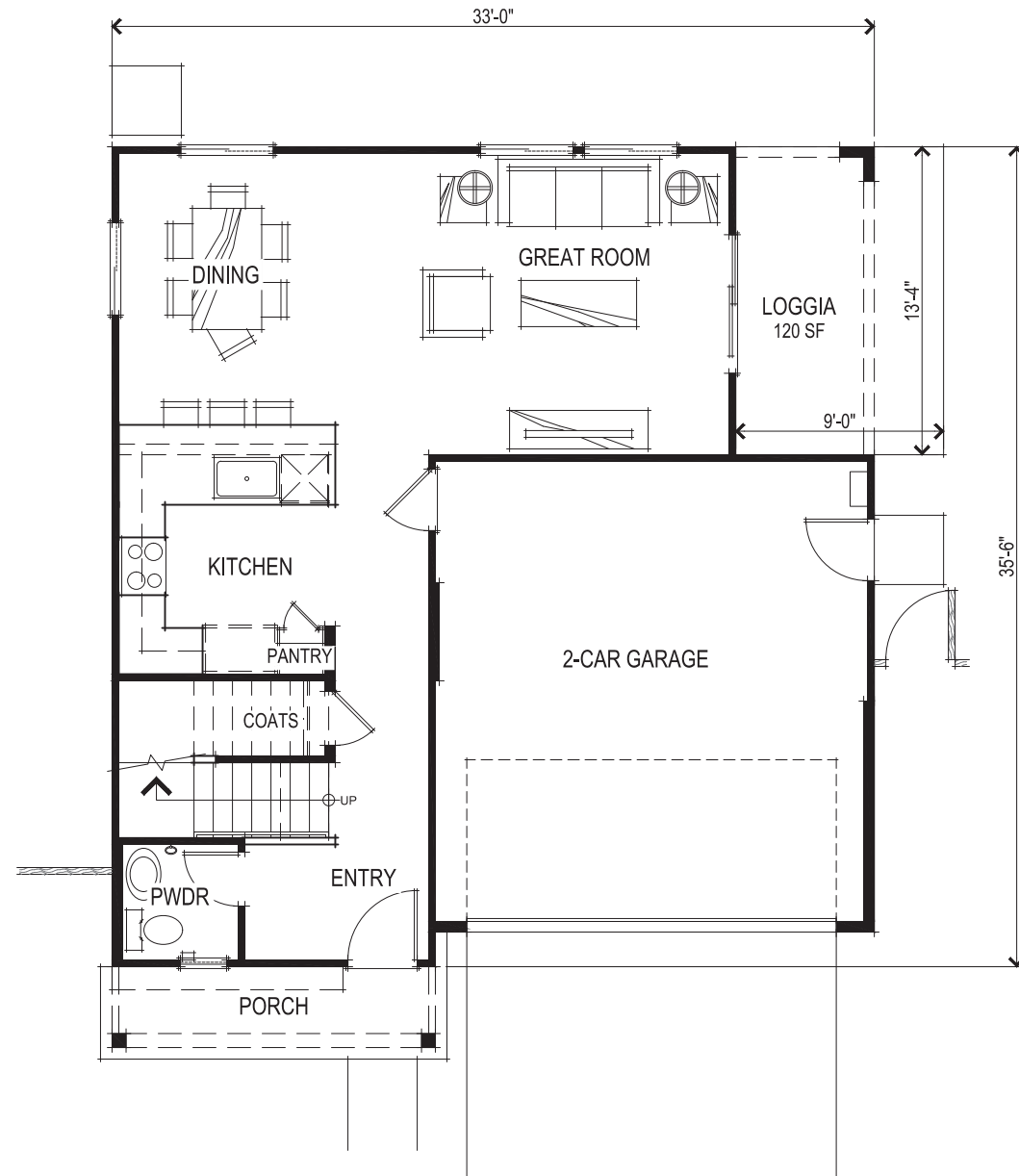
MISSION ENHANCED ELEVATIONS  
1621-05E

372.173 Isles(Fiddyment F-6C1)  
Roseville, CA  
August 18, 2021

# Exhibit D

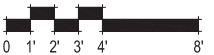


SECOND FLOOR PLAN



FIRST FLOOR PLAN

SQUARE FOOTAGES	
FIRST FLOOR	674 SQ. FT.
SECOND FLOOR	1088 SQ. FT.
TOTAL LIVING	1762 SQ. FT.
2-CAR GARAGE	389 SQ. FT.



FLOOR PLANS  
1762-01

372.173 Isles(Fiddyment F-6C1)  
Roseville, CA  
August 18, 2021

# Exhibit D



- DECORATIVE TILE VENT
- DECORATIVE SHUTTER
- CEMENT PLASTER FINISH

MISSION FRONT ELEVATION



- 1x3 BATTS of SMOOTH HARDIE PANEL
- ILLUMINATED ADDRESS, TYP.
- EXTERIOR LIGHT LOCATION, TYP.
- CEMENT PLASTER FINISH

FARMHOUSE FRONT ELEVATION



- CEDARMILL HARDIE LAP SIDING
- CEMENT PLASTER FINISH
- STONE VENEER

CRAFTSMAN FRONT ELEVATION



FRONT ELEVATIONS  
1762-02

372.173 Isles(Fiddymnt F-6C1)  
Roseville, CA  
August 18, 2021

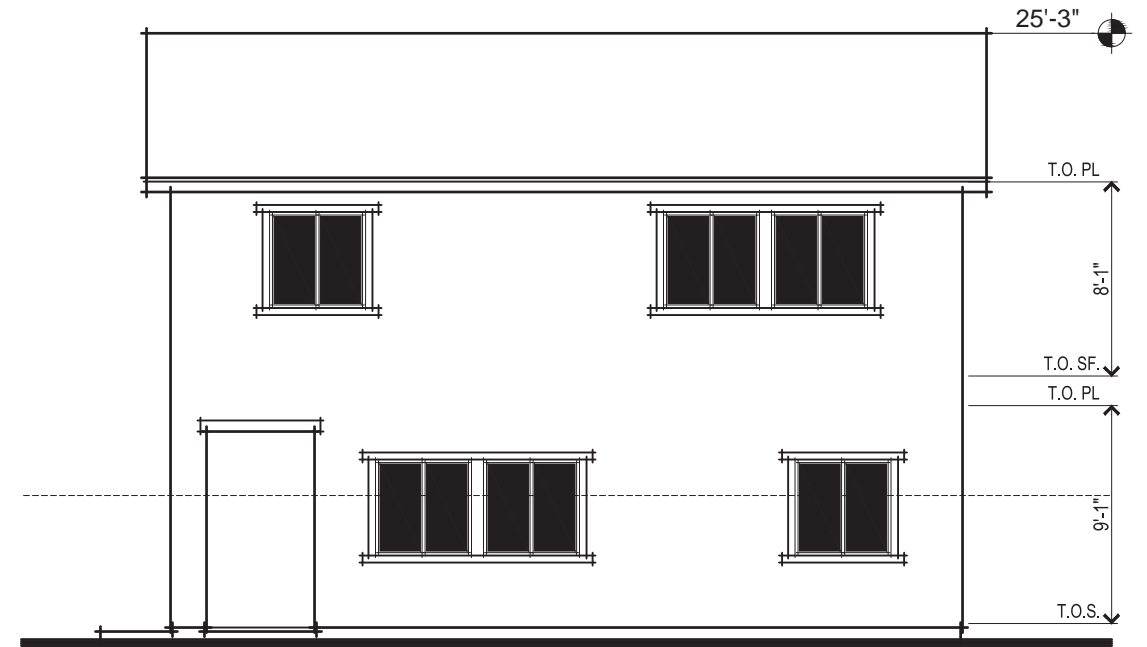
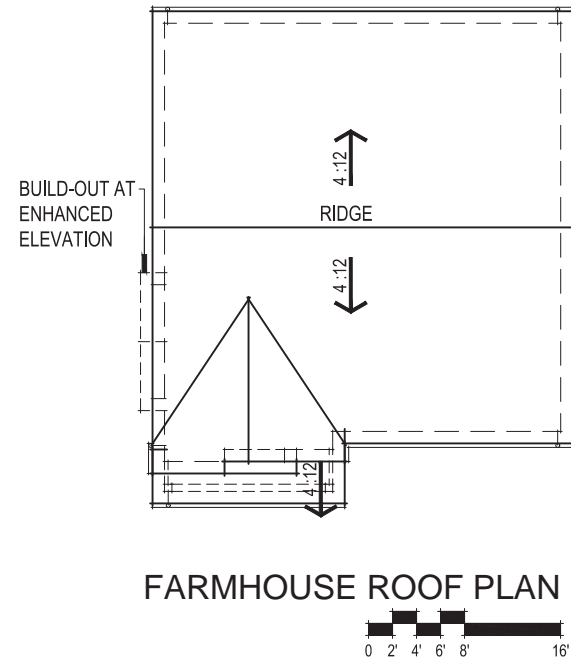
**Express**  
HOMES  
a D.R. Horton Company

2260 DOUGLAS BLVD. SUITE 110  
ROSEVILLE, CA 95661  
916.297.4461

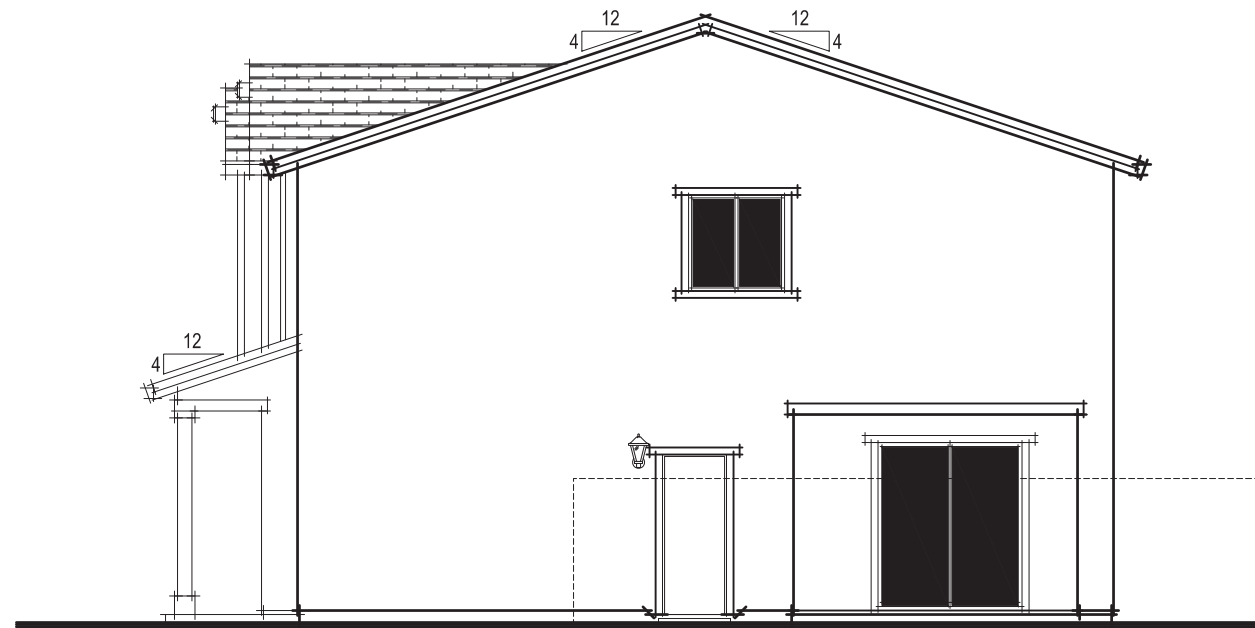
Home and community information, including pricing, included features, terms, availability and amenities, are subject to change at any time without notice or obligation. Drawings, renderings, square footages, floor plans, elevations, features, colors and sizes are approximate and for illustration purposes only and will vary from the homes as built. Not all features available in all plans. Options and upgrades are available at an additional cost and are subject to construction cut-off dates. See sales agent for complete details. D.R. Horton CA2, Inc.: CalBRE License #01239752; Contractor's License #750190.

SDG Architects, Inc.  
3361 Walnut Blvd. Suite 120  
Brentwood, CA 94513  
925.634.7000 | sdgarchitectinc.com

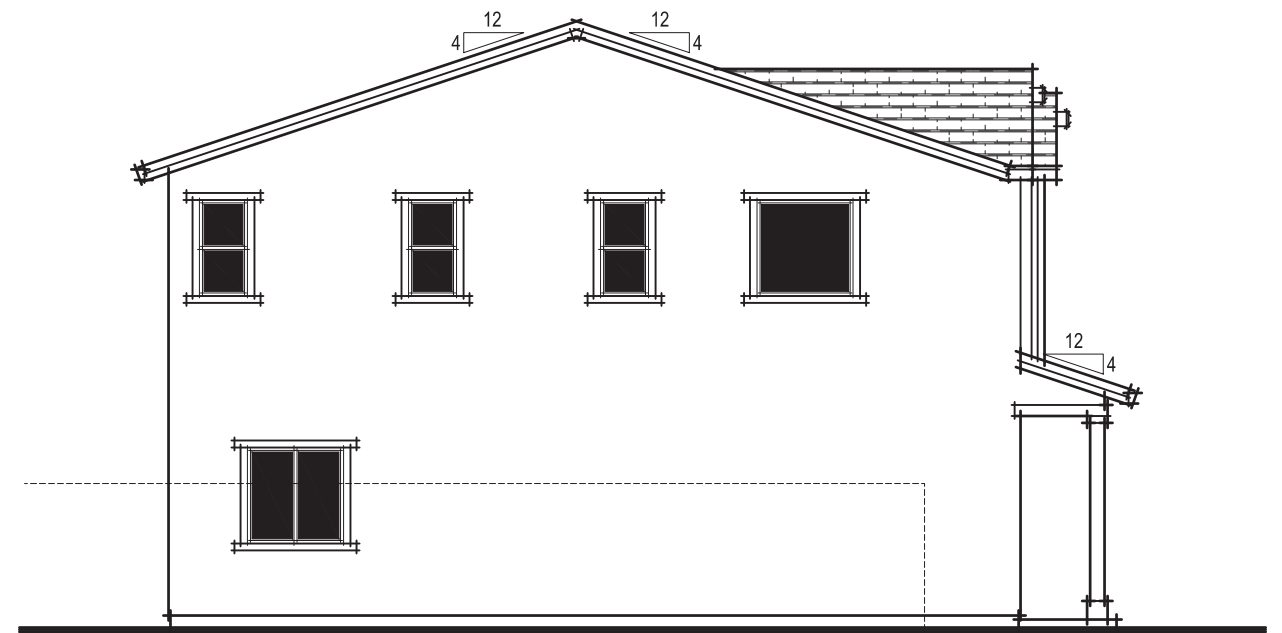
# Exhibit D



FARMHOUSE REAR ELEVATION



FARMHOUSE RIGHT ELEVATION



FARMHOUSE LEFT ELEVATION

372.173 Isles (Fiddymont F-6C1)  
 Roseville, CA  
 August 18, 2021

**Express**  
 HOMES  
 a D.R. Horton Company

2260 DOUGLAS BLVD. SUITE 110  
 ROSEVILLE, CA 95661  
 916.297.4461

Home and community information, including pricing, included features, terms, availability and amenities, are subject to change at any time without notice or obligation. Drawings, renderings, square footages, floor plans, elevations, features, colors and sizes are approximate and for illustration purposes only and will vary from the homes as built. Not all features available in all plans. Options and upgrades are available at an additional cost and are subject to construction cut-off dates. See sales agent for complete details. D.R. Horton CA2, Inc.: CalBRE License #01239752; Contractor's License #750190.

0 1' 2' 3' 4' 8'

FARMHOUSE ELEVATIONS  
 1762-03

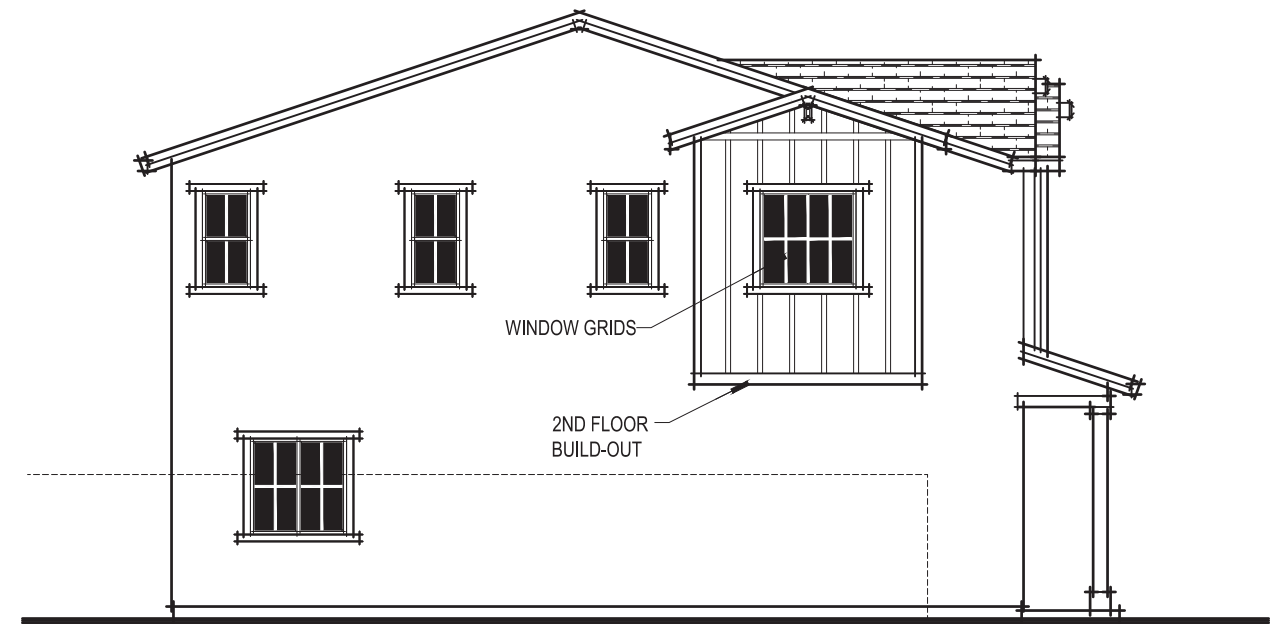
**SDG Architects, Inc.**  
 3361 Walnut Blvd. Suite 120  
 Brentwood, CA 94513  
 925.634.7000 | sdgarchitectinc.com

**SDG**  
 architects

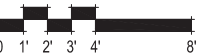
# Exhibit D



FARMHOUSE ENHANCED REAR ELEVATION



FARMHOUSE ENHANCED LEFT ELEVATION



FARMHOUSE ENHANCED ELEVATIONS

1762-03E

372.173 Isles(Fiddymnt F-6C1)

Roseville, CA  
August 18, 2021



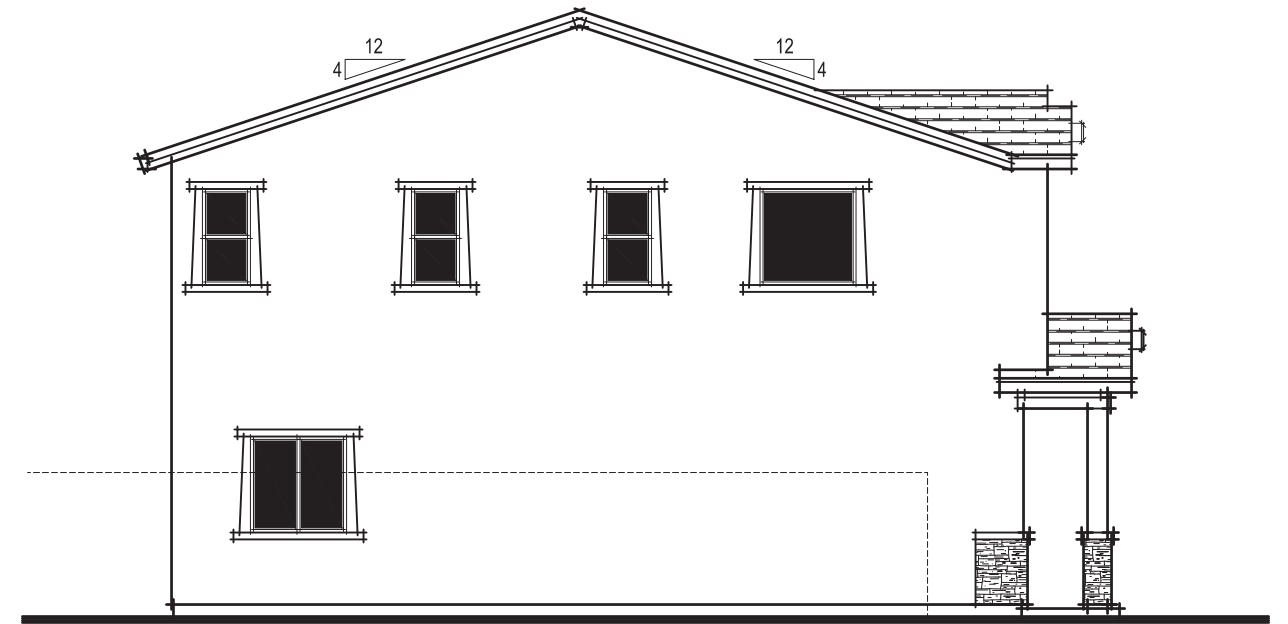
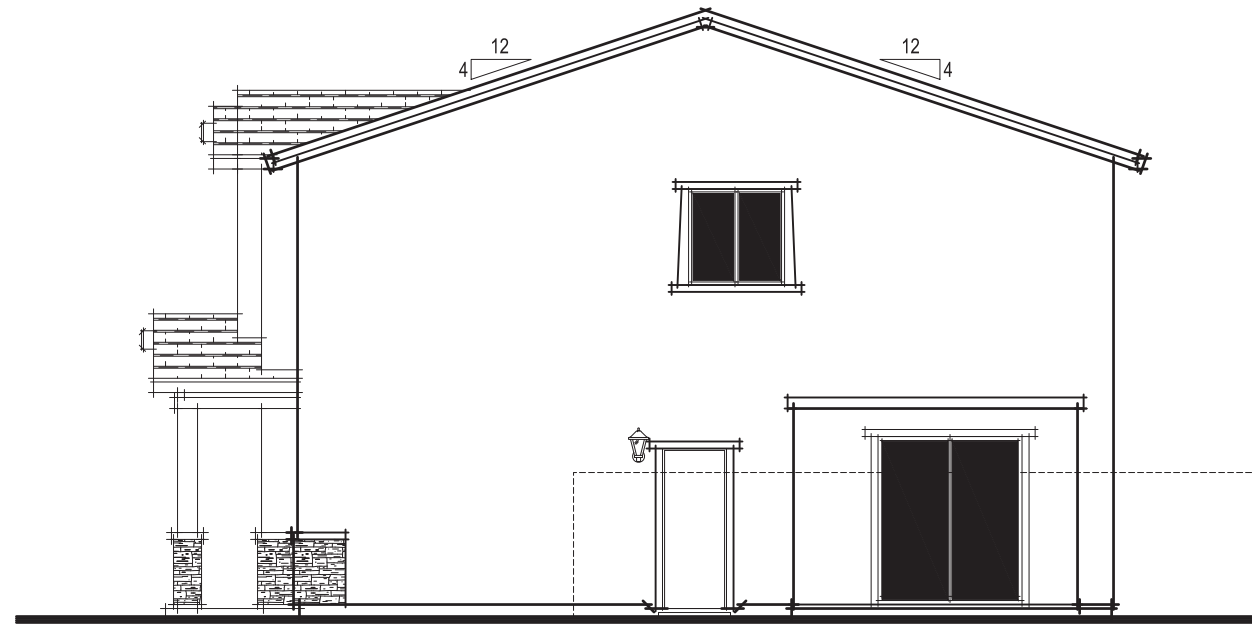
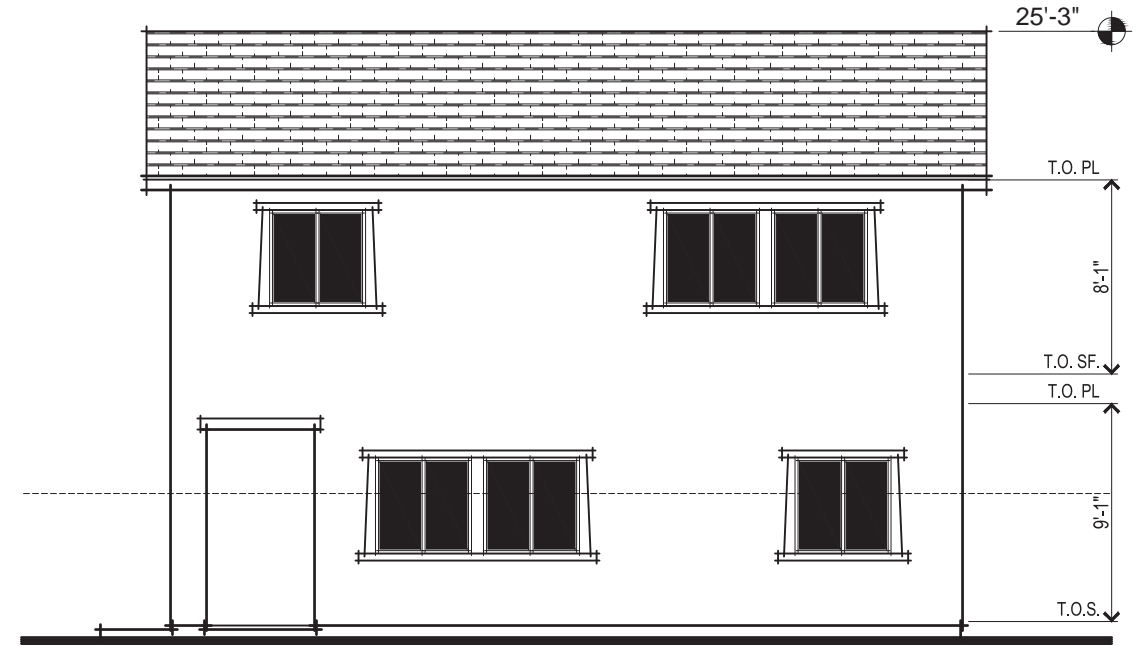
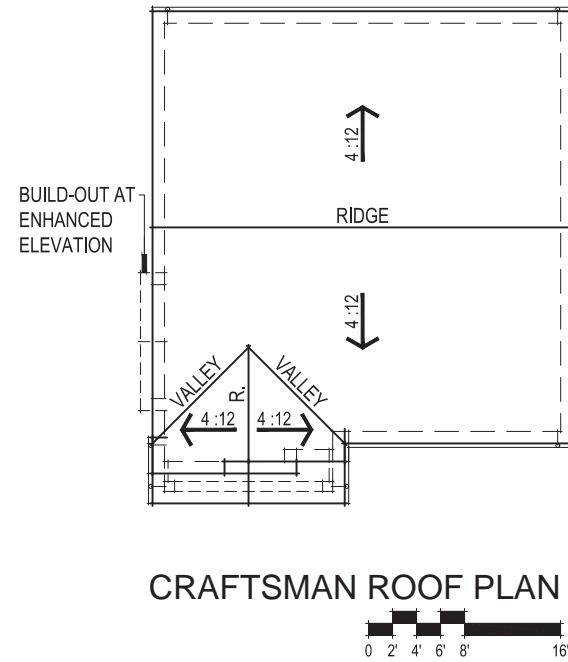
2260 DOUGLAS BLVD. SUITE 110  
ROSEVILLE, CA 95661  
916.297.4461

Home and community information, including pricing, included features, terms, availability and amenities, are subject to change at any time without notice or obligation. Drawings, renderings, square footages, floor plans, elevations, features, colors and sizes are approximate and for illustration purposes only and will vary from the homes as built. Not all features available in all plans. Options and upgrades are available at an additional cost and are subject to construction cut-off dates. See sales agent for complete details. D.R. Horton CA2, Inc.: CalBRE License #01239752; Contractor's License #750190.

SDG Architects, Inc.  
3361 Walnut Blvd, Suite 120  
Brentwood, CA 94513  
925.634.7000 | sdgarchitectinc.com



# Exhibit D



372.173 Isles(Fiddymnt F-6C1)  
Roseville, CA  
August 18, 2021

**Express**  
HOMES  
a D.R. Horton Company

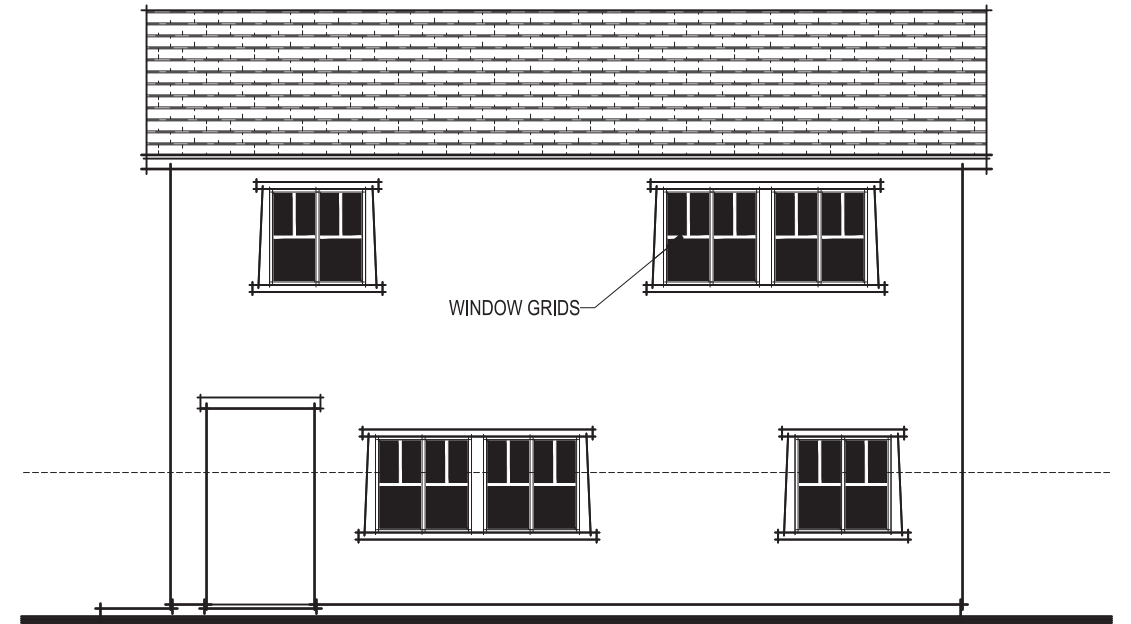
2260 DOUGLAS BLVD. SUITE 110  
ROSEVILLE, CA 95661  
916.297.4461

Home and community information, including pricing, included features, terms, availability and amenities, are subject to change at any time without notice or obligation. Drawings, renderings, square footages, floor plans, elevations, features, colors and sizes are approximate and for illustration purposes only and will vary from the homes as built. Not all features available in all plans. Options and upgrades are available at an additional cost and are subject to construction cut-off dates. See sales agent for complete details. D.R. Horton CA2, Inc.: CalBRE License #01239752; Contractor's License #750190.

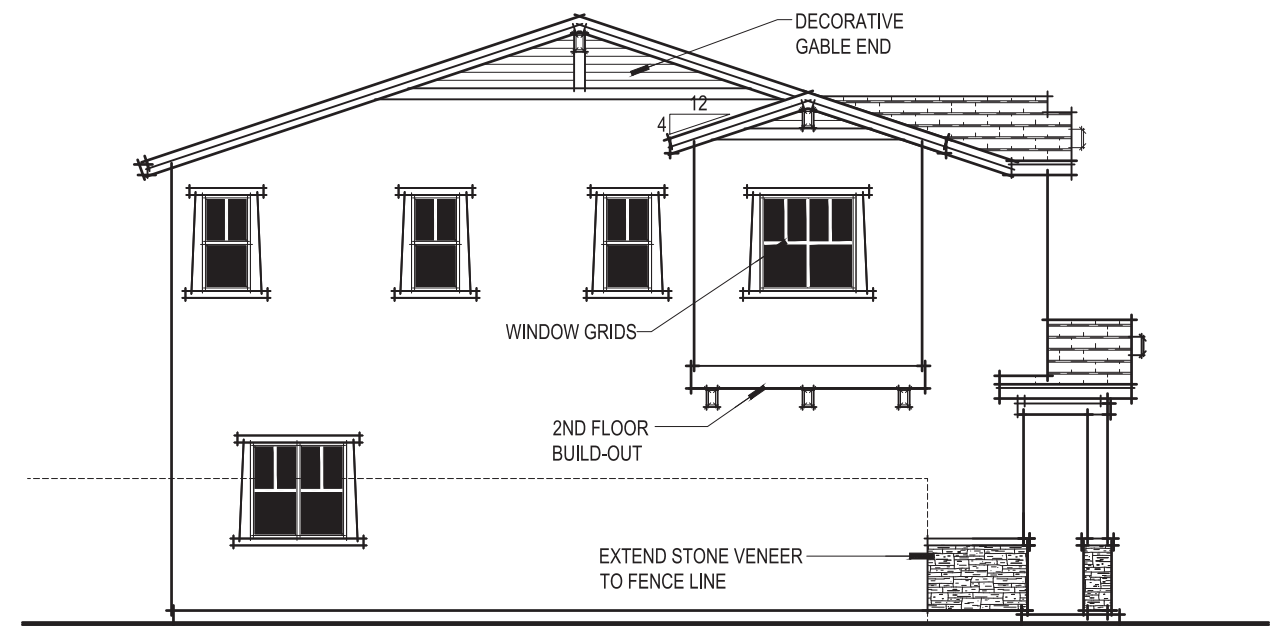
CRAFTSMAN ELEVATIONS  
1762-04

SDG Architects, Inc.  
3361 Walnut Blvd. Suite 120  
Brentwood, CA 94513  
925.634.7000 | sdgarchitectinc.com

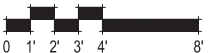
# Exhibit D



CRAFTSMAN ENHANCED REAR ELEVATION



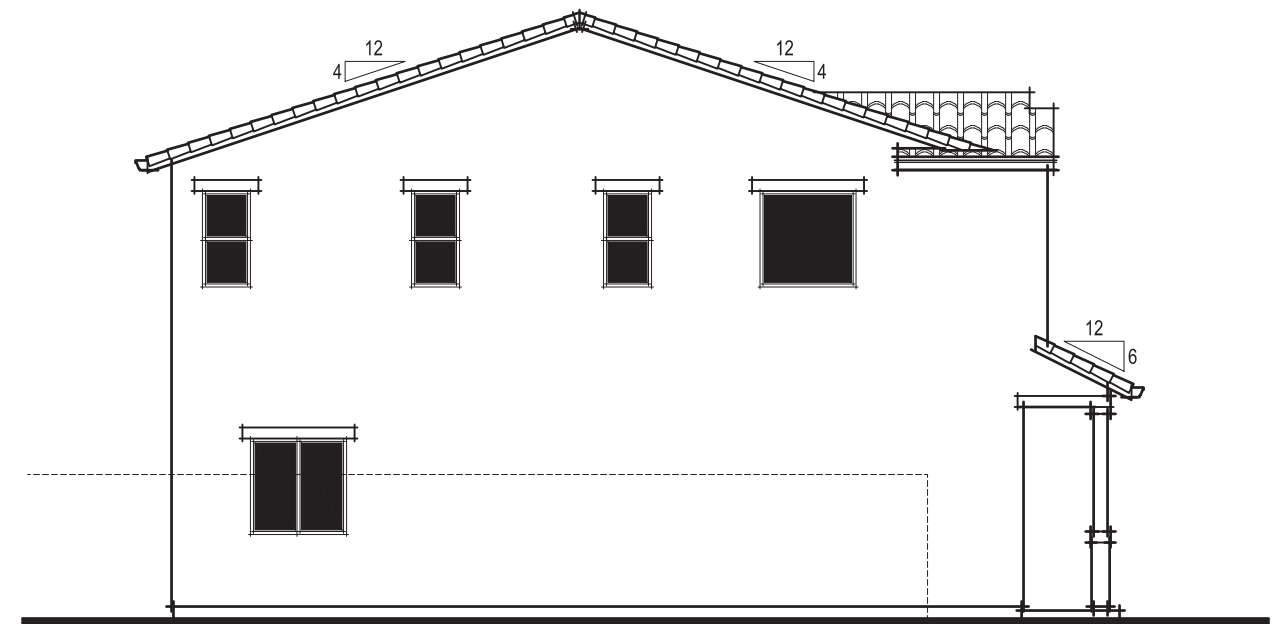
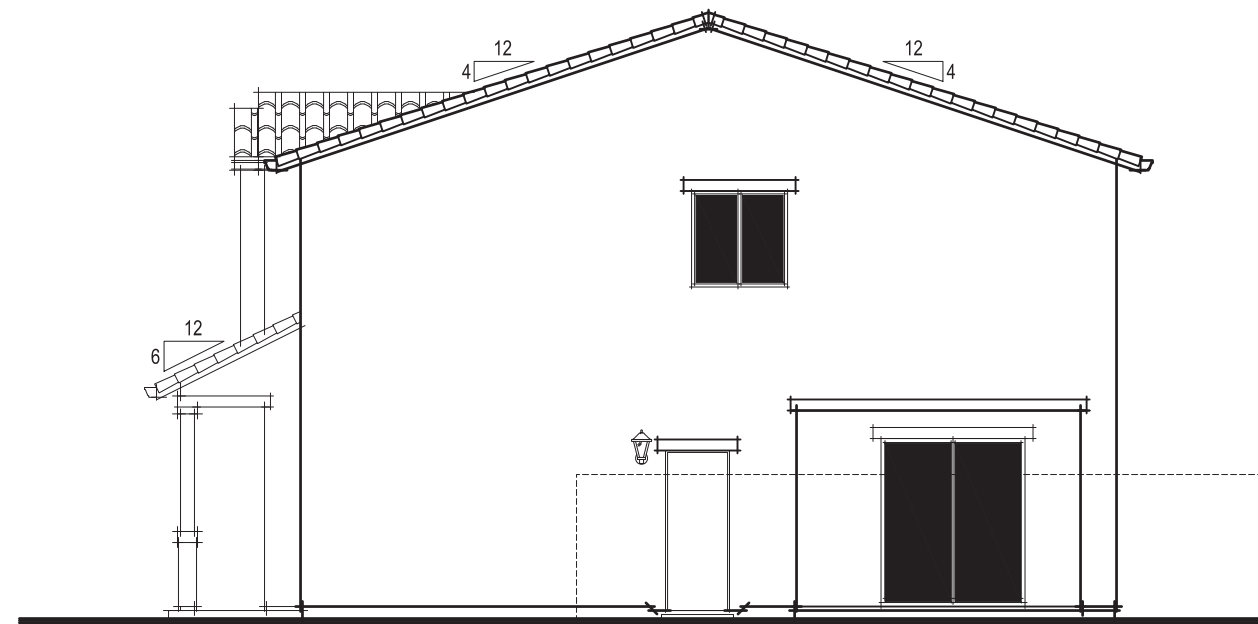
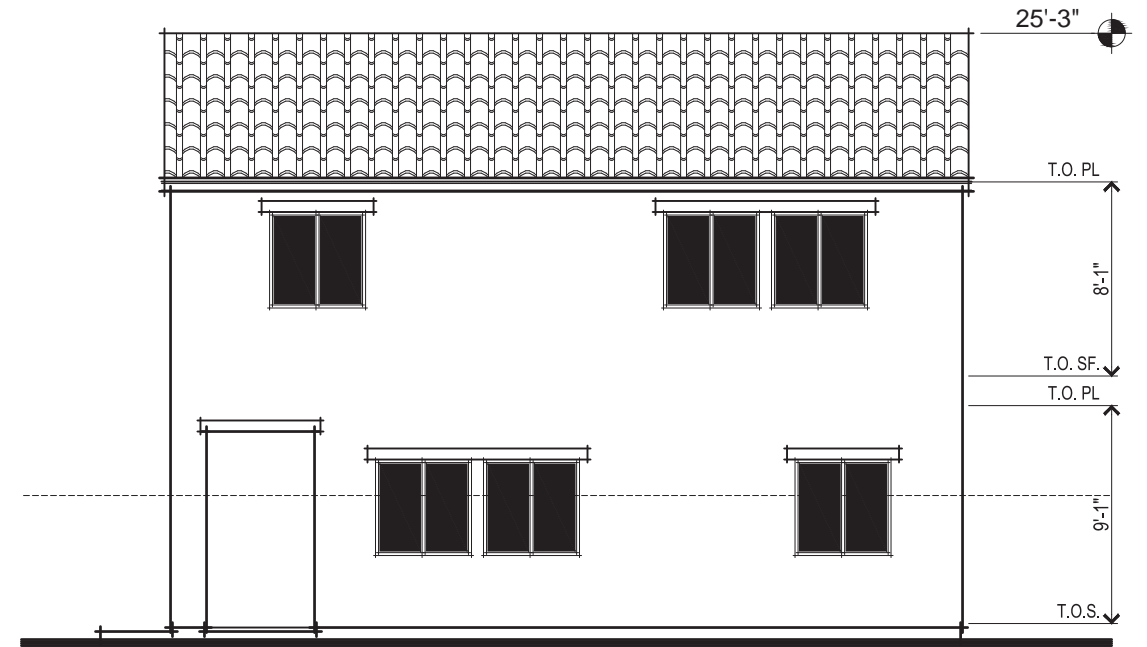
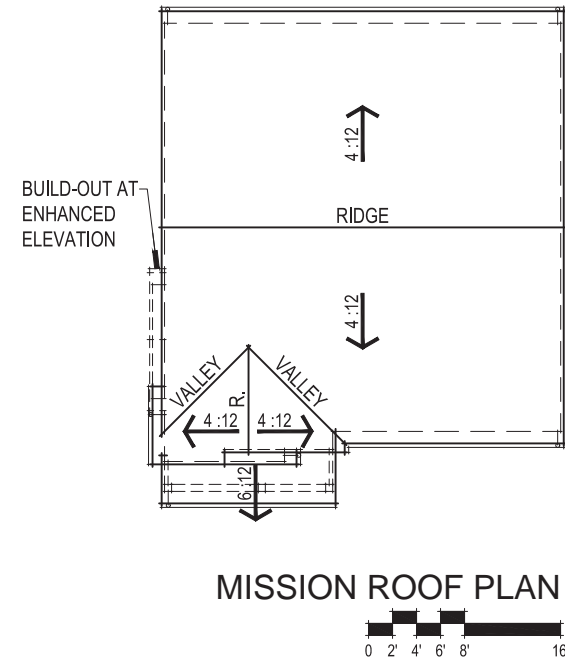
CRAFTSMAN ENHANCED LEFT ELEVATION



CRAFTSMAN ENHANCED ELEVATIONS  
1762-04E

372.173 Isles(Fiddymnt F-6C1)  
Roseville, CA  
August 18, 2021

# Exhibit D



372.173 Isles (Fiddymet F-6C1)  
Roseville, CA  
August 18, 2021

**Express**  
HOMES  
a D.R. Horton Company

2260 DOUGLAS BLVD. SUITE 110  
ROSEVILLE, CA 95661  
916.297.4461

Home and community information, including pricing, included features, terms, availability and amenities, are subject to change at any time without notice or obligation. Drawings, renderings, square footages, floor plans, elevations, features, colors and sizes are approximate and for illustration purposes only and will vary from the homes as built. Not all features available in all plans. Options and upgrades are available at an additional cost and are subject to construction cut-off dates. See sales agent for complete details. D.R. Horton CA2, Inc.: CalBRE License #01239752; Contractor's License #750190.

MISSION ELEVATIONS

1762-05

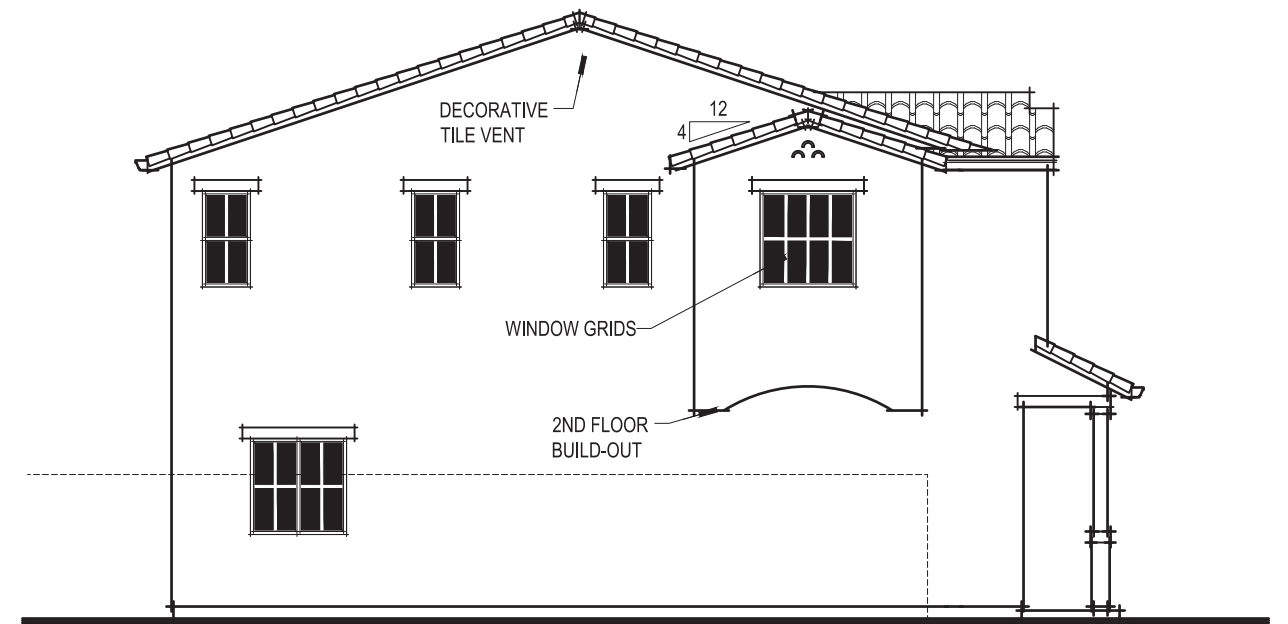
SDG Architects, Inc.  
3361 Walnut Blvd, Suite 120  
Brentwood, CA 94513  
925.634.7000 | sdgarchitectinc.com

**SDG**  
architects

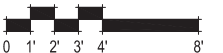
# Exhibit D



MISSION ENHANCED REAR ELEVATION



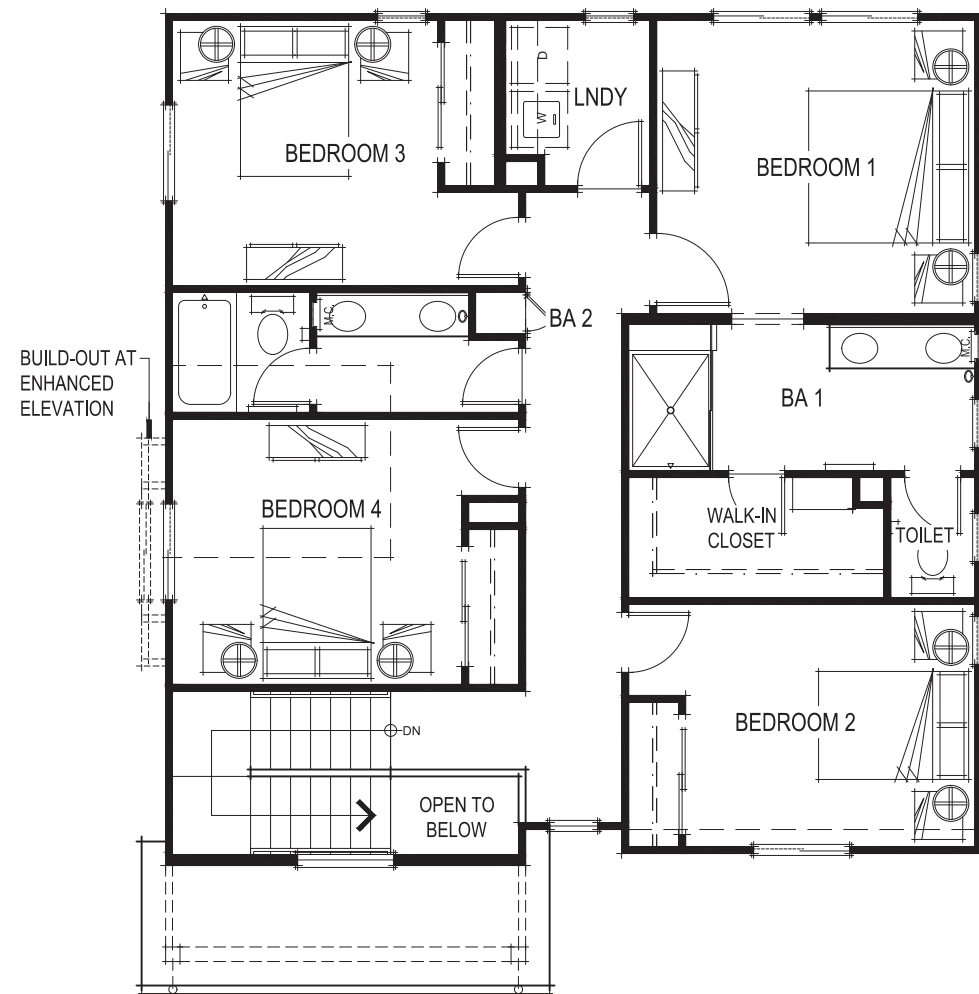
MISSION ENHANCED LEFT ELEVATION



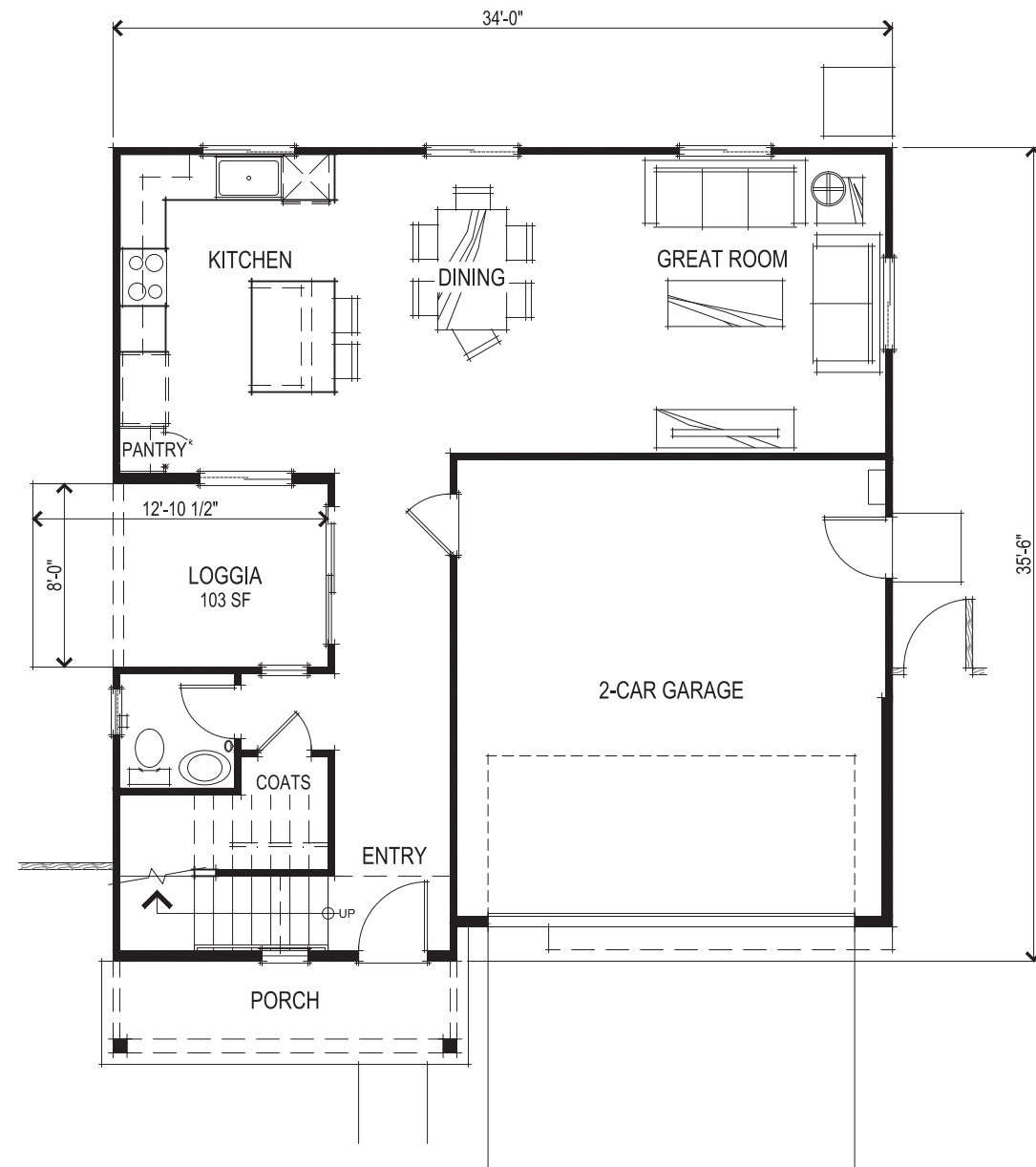
MISSION ENHANCED ELEVATIONS  
1762-05E

372.173 Isles (Fiddymont F-6C1)  
Roseville, CA  
August 18, 2021

# Exhibit D

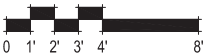


SECOND FLOOR PLAN



FIRST FLOOR PLAN

SQUARE FOOTAGES	
FIRST FLOOR	716 SQ. FT.
SECOND FLOOR	1116 SQ. FT.
TOTAL LIVING	1832 SQ. FT.
2-CAR GARAGE	387 SQ. FT.



FLOOR PLANS  
1832-01

372.173 Isles(Fiddymnt F-6C1)  
Roseville, CA  
August 18, 2021

# Exhibit D



- DECORATIVE TILE VENT
- DECORATIVE SHUTTER
- CEMENT PLASTER FINISH

MISSION FRONT ELEVATION



- 1x3 BATTS of SMOOTH HARDIE PANEL
- ILLUMINATED ADDRESS, TYP.
- EXTERIOR LIGHT LOCATION, TYP.
- CEMENT PLASTER FINISH

FARMHOUSE FRONT ELEVATION



- CEDARMILL HARDIE LAP SIDING
- CEMENT PLASTER FINISH
- STONE VENEER

CRAFTSMAN FRONT ELEVATION

372.173 Isles(Fiddymnt F-6C1)  
 Roseville, CA  
 August 18, 2021

**Express**  
 HOMES  
 a D.R. Horton Company

2260 DOUGLAS BLVD. SUITE 110  
 ROSEVILLE, CA 95661  
 916.297.4461

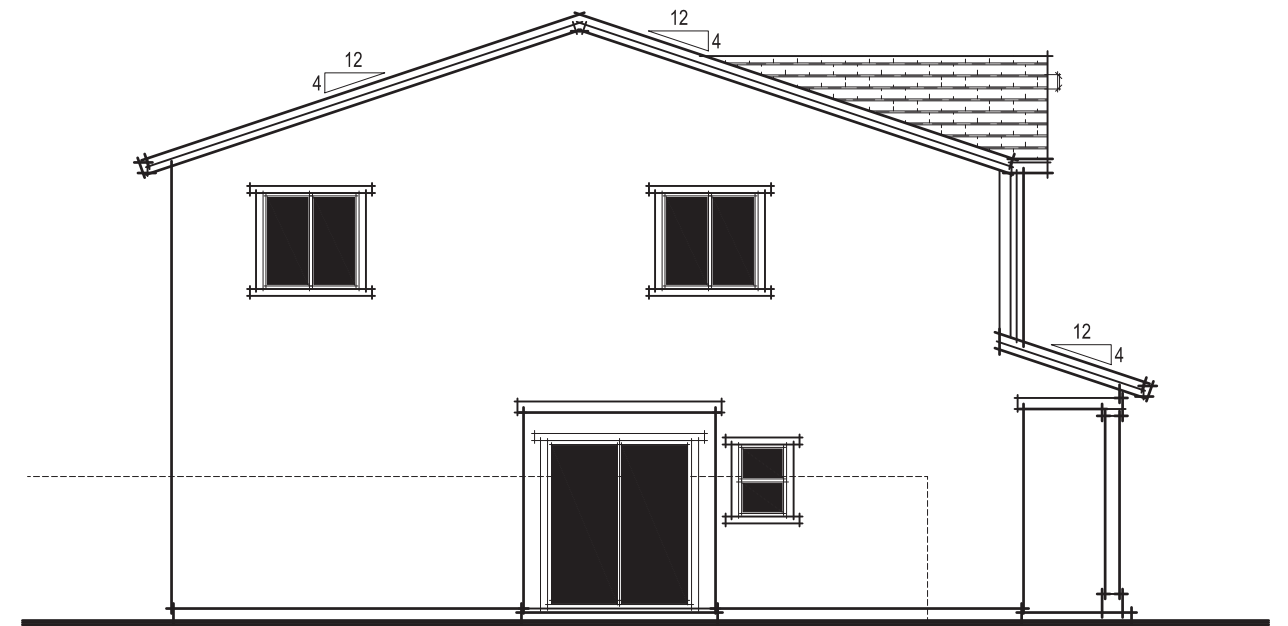
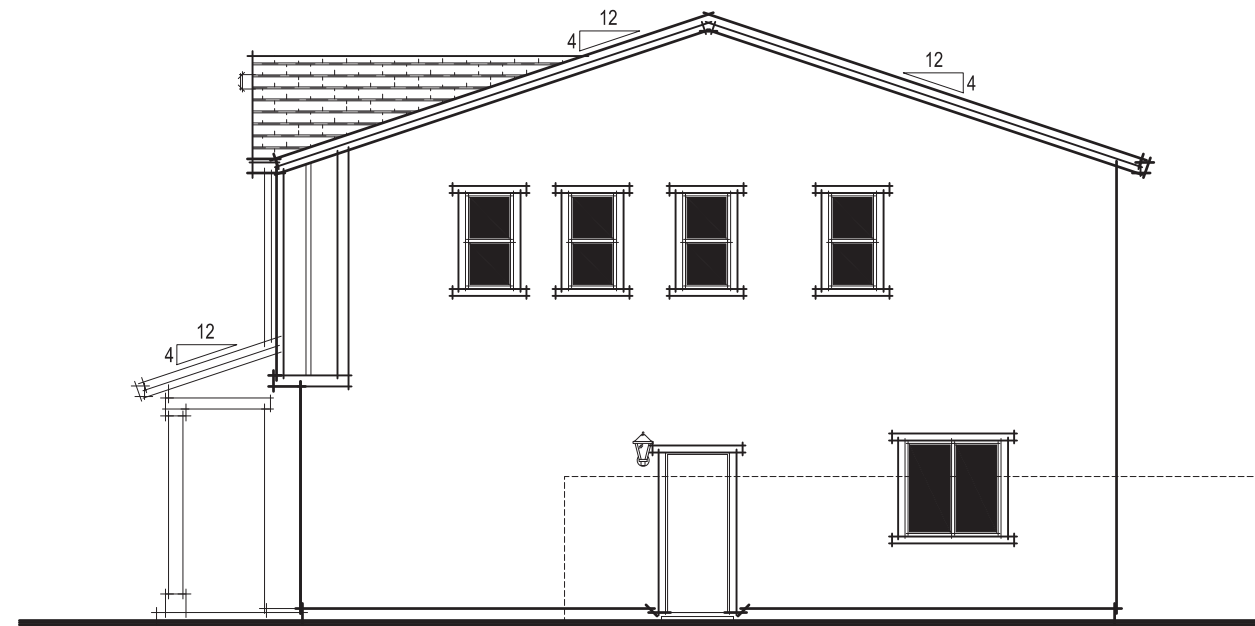
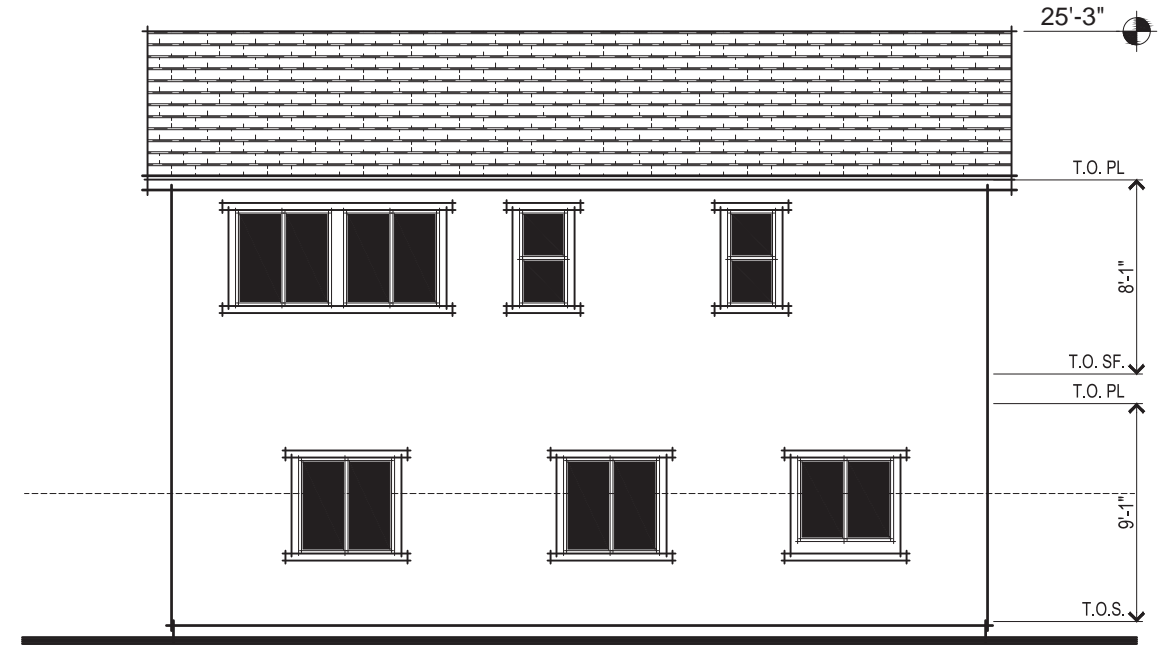
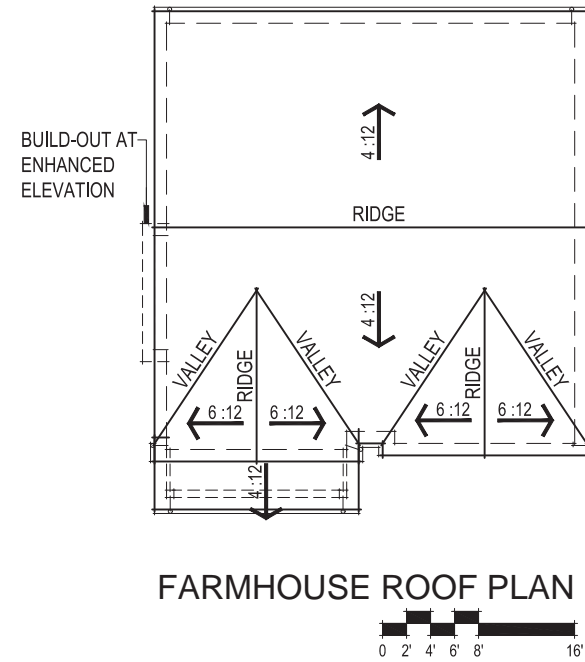
Home and community information, including pricing, included features, terms, availability and amenities, are subject to change at any time without notice or obligation. Drawings, renderings, square footages, floor plans, elevations, features, colors and sizes are approximate and for illustration purposes only and will vary from the homes as built. Not all features available in all plans. Options and upgrades are available at an additional cost and are subject to construction cut-off dates. See sales agent for complete details. D.R. Horton CA2, Inc.: CalBRE License #01239752; Contractor's License #750190.

0 1' 2' 3' 4' 8'  
 FRONT ELEVATIONS  
 1832-02

SDG Architects, Inc.  
 3361 Walnut Blvd, Suite 120  
 Brentwood, CA 94513  
 925.634.7000 | sdgarchitectinc.com



# Exhibit D



372.173 Isles (Fiddymet F-6C1)  
Roseville, CA  
August 18, 2021

**Express**  
HOMES  
a D.R. Horton Company

2260 DOUGLAS BLVD. SUITE 110  
ROSEVILLE, CA 95661  
916.297.4461

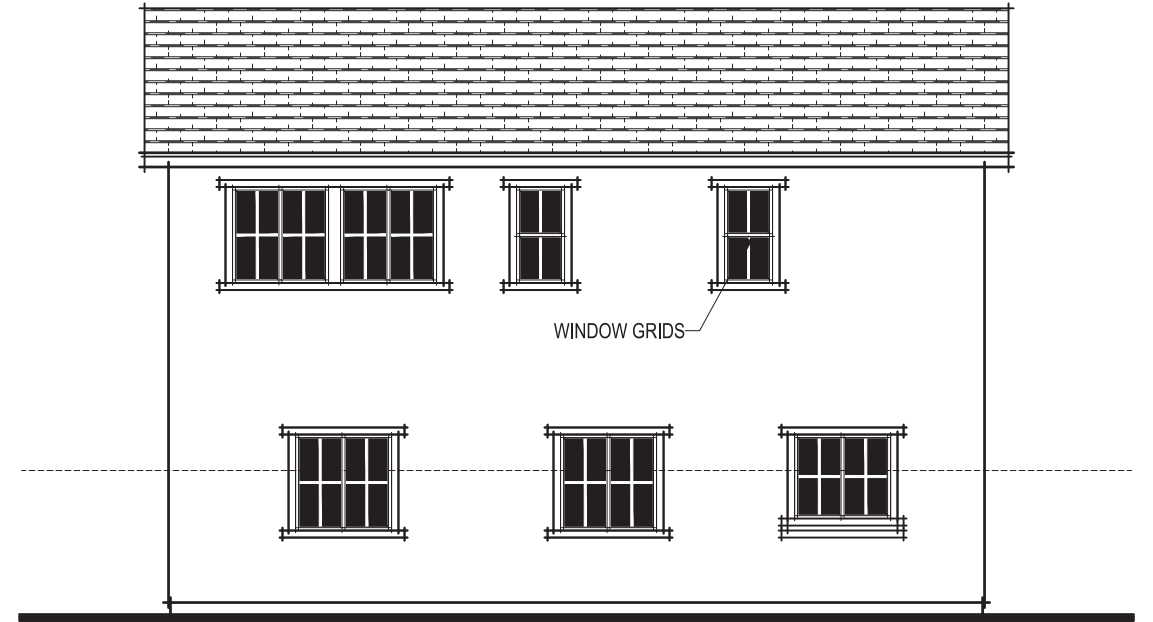
Home and community information, including pricing, included features, terms, availability and amenities, are subject to change at any time without notice or obligation. Drawings, renderings, square footages, floor plans, elevations, features, colors and sizes are approximate and for illustration purposes only and will vary from the homes as built. Not all features available in all plans. Options and upgrades are available at an additional cost and are subject to construction cut-off dates. See sales agent for complete details. D.R. Horton CA2, Inc.: CalBRE License #01239752; Contractor's License #750190.

FARMHOUSE ELEVATIONS  
1832-03

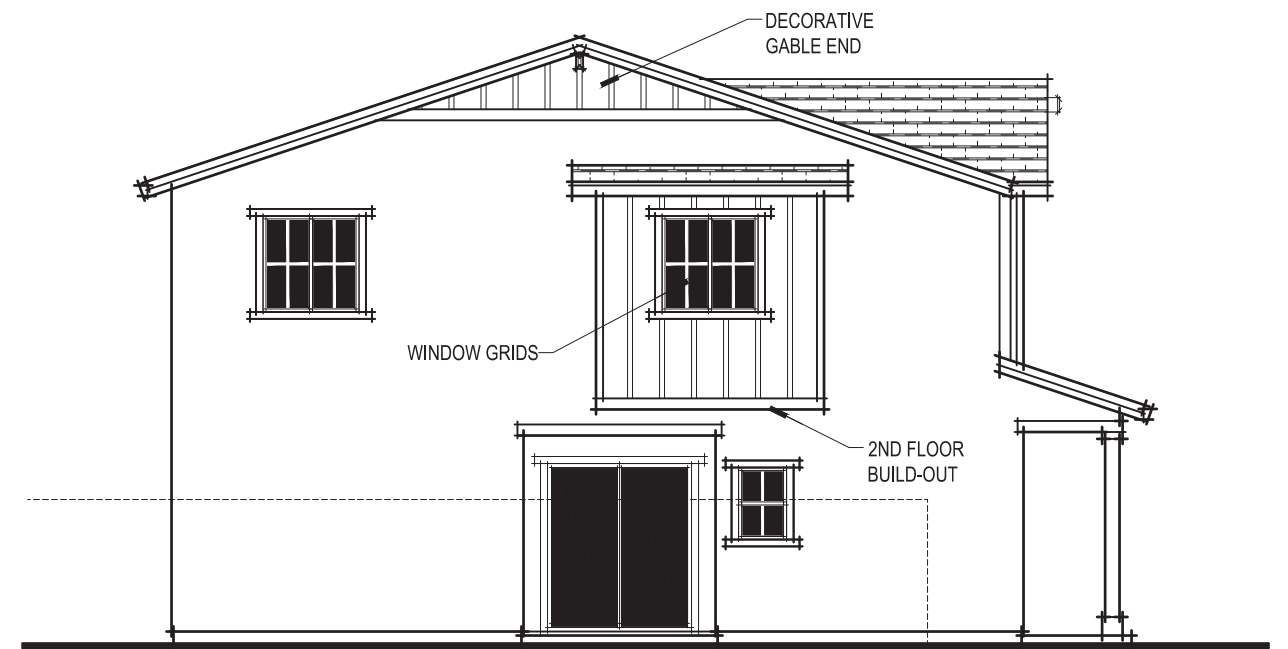
SDG Architects, Inc.  
3361 Walnut Blvd, Suite 120  
Brentwood, CA 94513  
925.634.7000 | sdgarchitectinc.com

**SDG**  
architects

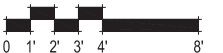
# Exhibit D



FARMHOUSE ENHANCED REAR ELEVATION



FARMHOUSE ENHANCED LEFT ELEVATION



FARMHOUSE ENHANCED ELEVATIONS

1832-03E

372.173 Isles(Fiddymnt F-6C1)

Roseville, CA  
August 18, 2021



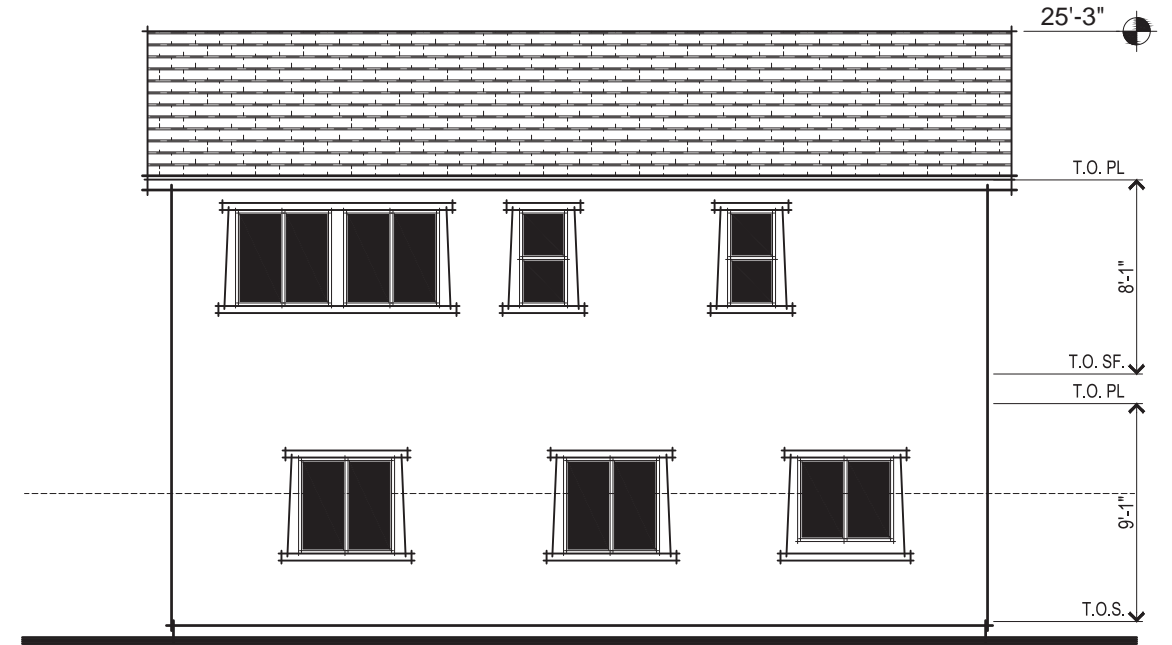
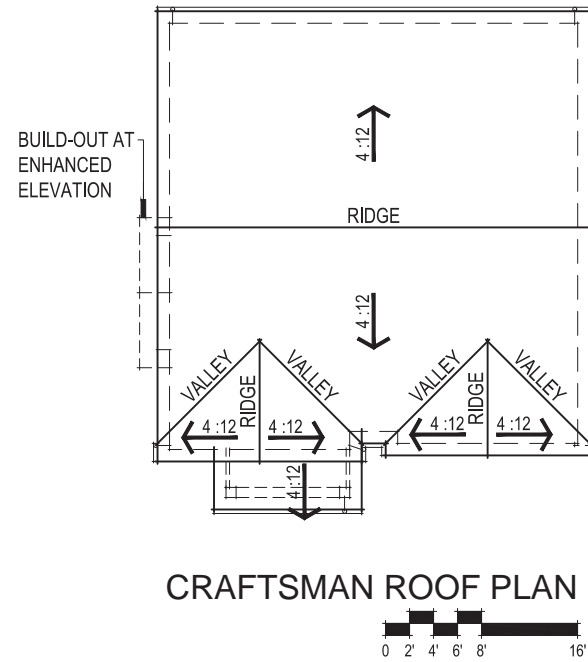
2260 DOUGLAS BLVD. SUITE 110  
ROSEVILLE, CA 95661  
916.297.4461

Home and community information, including pricing, included features, terms, availability and amenities, are subject to change at any time without notice or obligation. Drawings, renderings, square footages, floor plans, elevations, features, colors and sizes are approximate and for illustration purposes only and will vary from the homes as built. Not all features available in all plans. Options and upgrades are available at an additional cost and are subject to construction cut-off dates. See sales agent for complete details. D.R. Horton CA2, Inc.: CalBRE License #01239752; Contractor's License #750190.

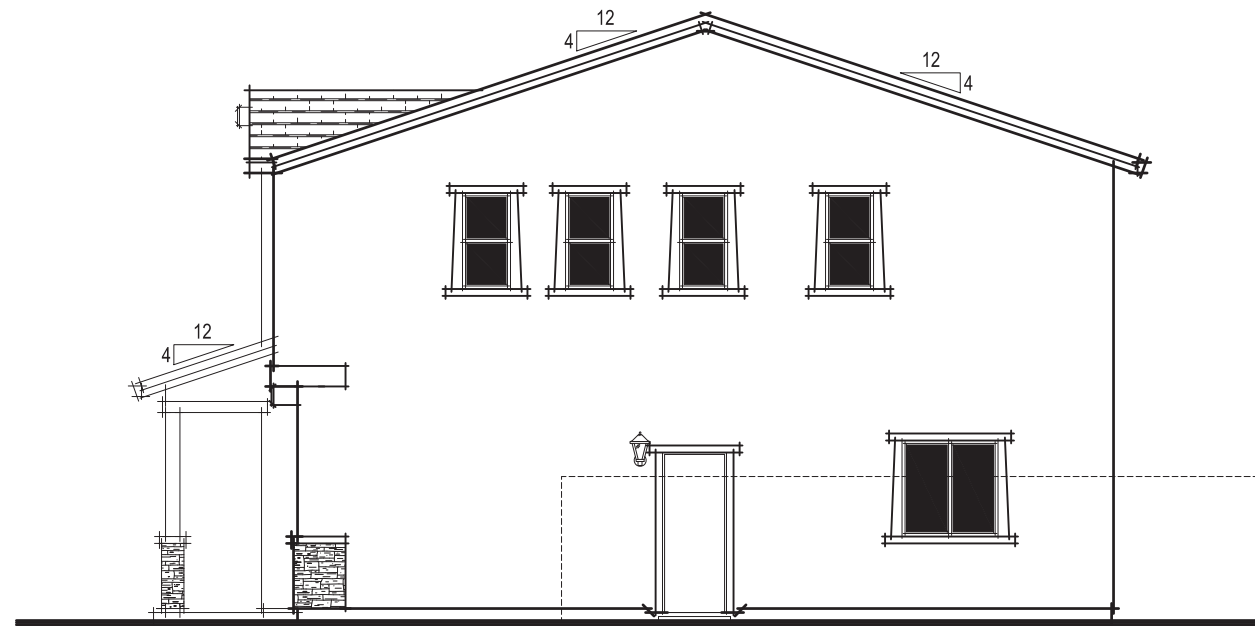
SDG Architects, Inc.  
3361 Walnut Blvd, Suite 120  
Brentwood, CA 94513  
925.634.7000 | sdgarchitectinc.com



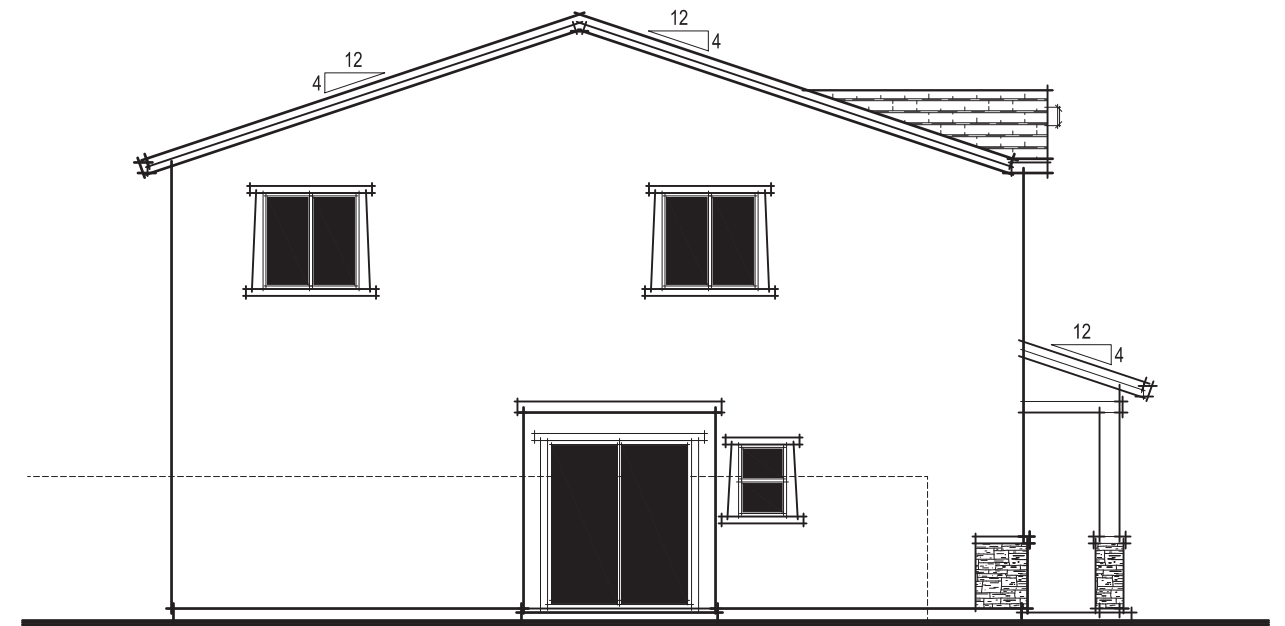
# Exhibit D



CRAFTSMAN REAR ELEVATION



CRAFTSMAN RIGHT ELEVATION



CRAFTSMAN LEFT ELEVATION

372.173 Isles(Fiddymnt F-6C1)  
Roseville, CA  
August 18, 2021

**Express**  
HOMES  
a D.R. Horton Company

2260 DOUGLAS BLVD. SUITE 110  
ROSEVILLE, CA 95661  
916.297.4461

Home and community information, including pricing, included features, terms, availability and amenities, are subject to change at any time without notice or obligation. Drawings, renderings, square footages, floor plans, elevations, features, colors and sizes are approximate and for illustration purposes only and will vary from the homes as built. Not all features available in all plans. Options and upgrades are available at an additional cost and are subject to construction cut-off dates. See sales agent for complete details. D.R. Horton CA2, Inc.: CalBRE License #01239752; Contractor's License #750190.

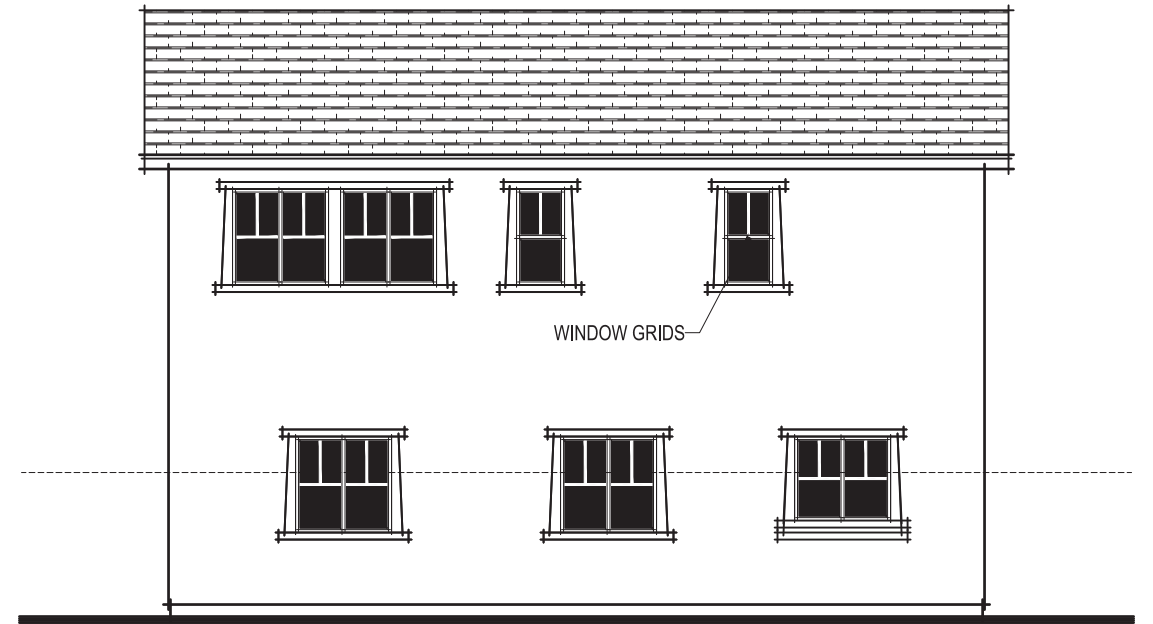
0 1 2 3 4 8'

CRAFTSMAN ELEVATIONS  
1832-04

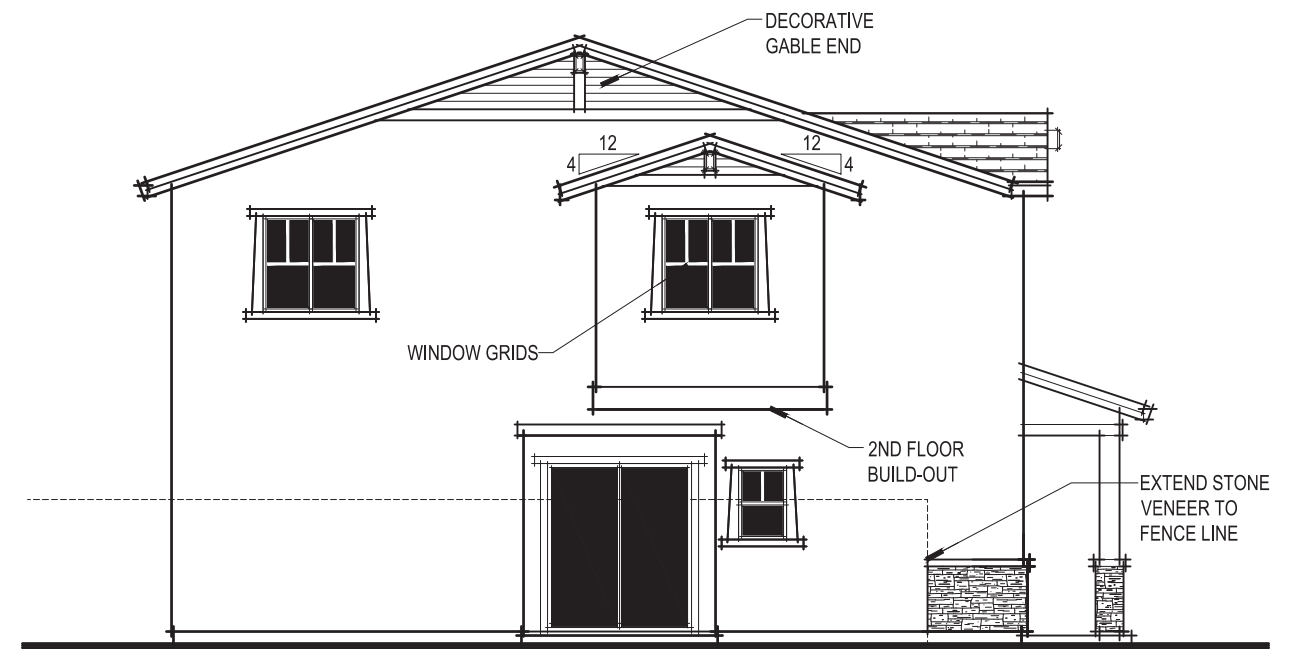
SDG Architects, Inc.  
3361 Walnut Blvd. Suite 120  
Brentwood, CA 94513  
925.634.7000 | sdgarchitectinc.com

**SDG**  
architects

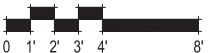
# Exhibit D



CRAFTSMAN ENHANCED REAR ELEVATION



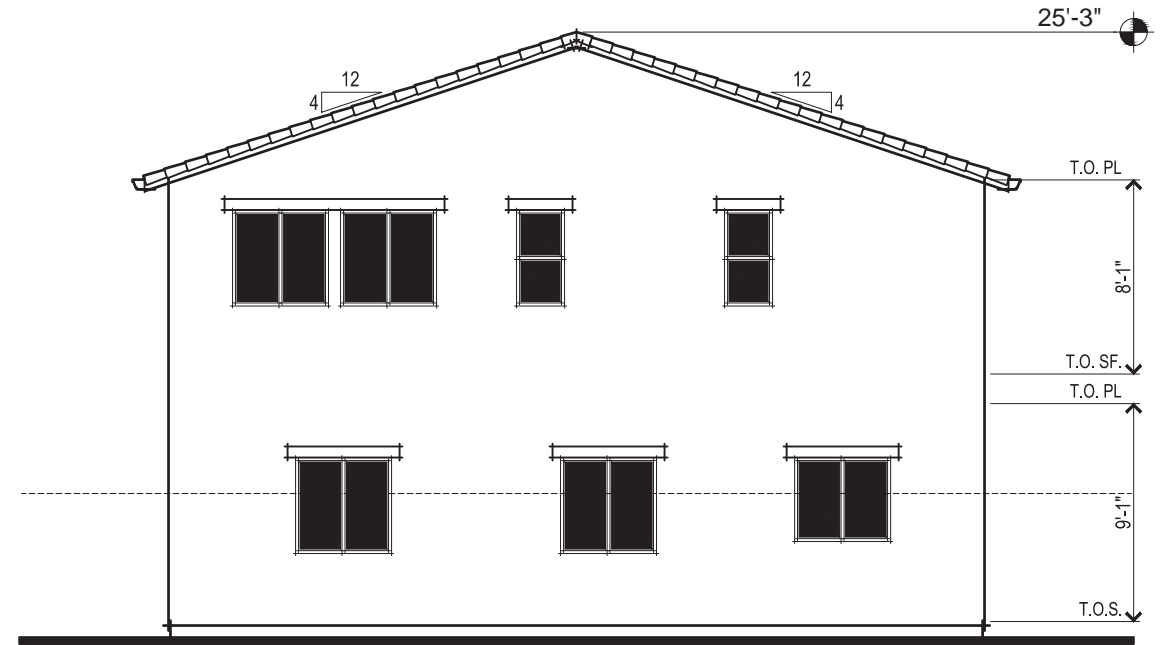
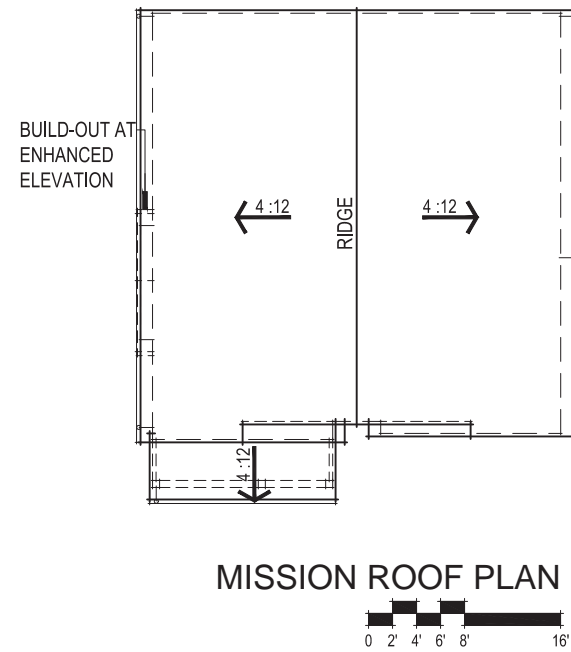
CRAFTSMAN ENHANCED LEFT ELEVATION



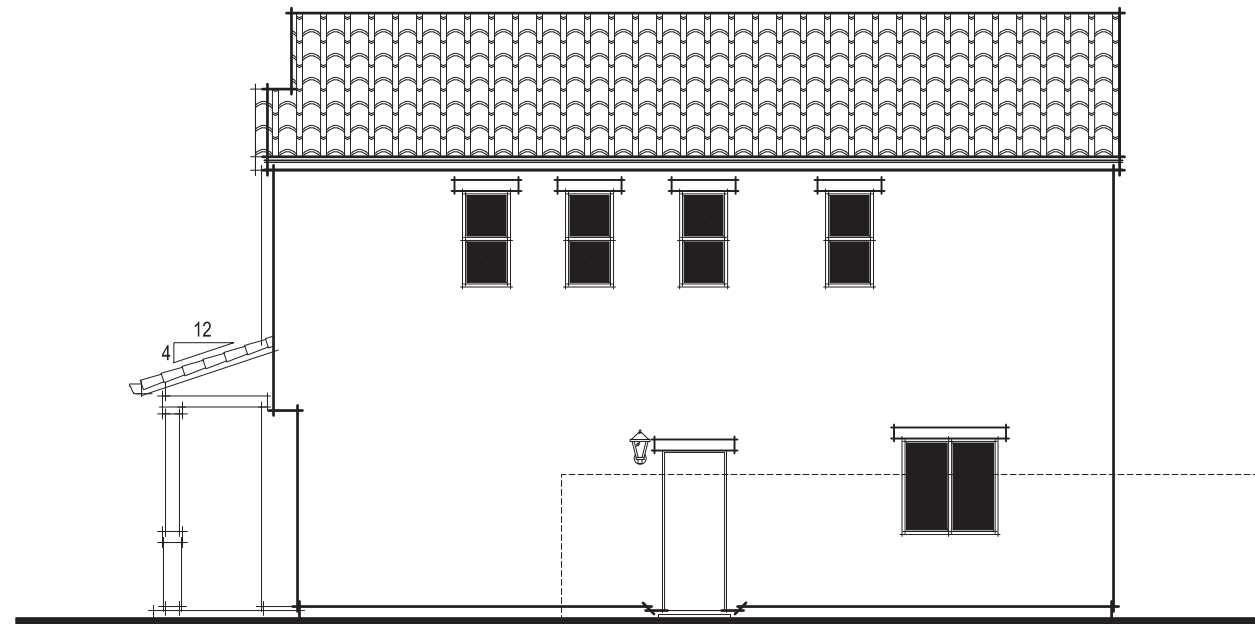
CRAFTSMAN ENHANCED ELEVATIONS  
1832-04E

372.173 Isles(Fiddymment F-6C1)  
Roseville, CA  
August 18, 2021

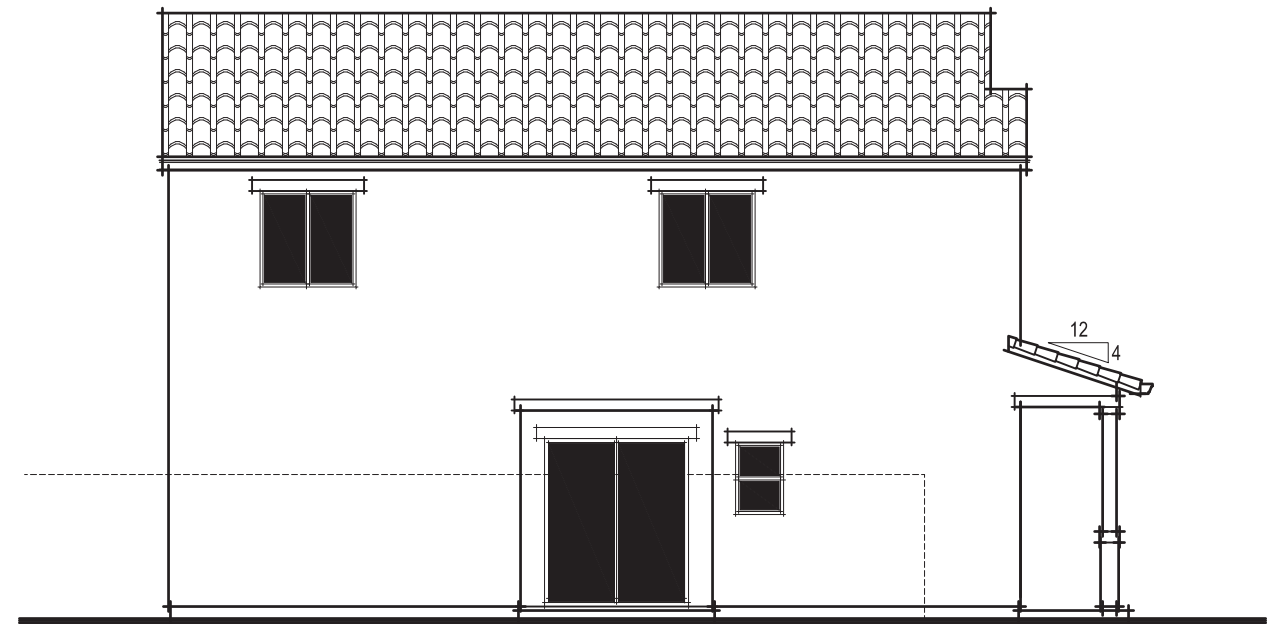
# Exhibit D



MISSION REAR ELEVATION



MISSION RIGHT ELEVATION



MISSION LEFT ELEVATION

372.173 Isles (Fiddymet F-6C1)  
Roseville, CA  
August 18, 2021

**Express**  
HOMES  
a D.R. Horton Company

2260 DOUGLAS BLVD. SUITE 110  
ROSEVILLE, CA 95661  
916.297.4461

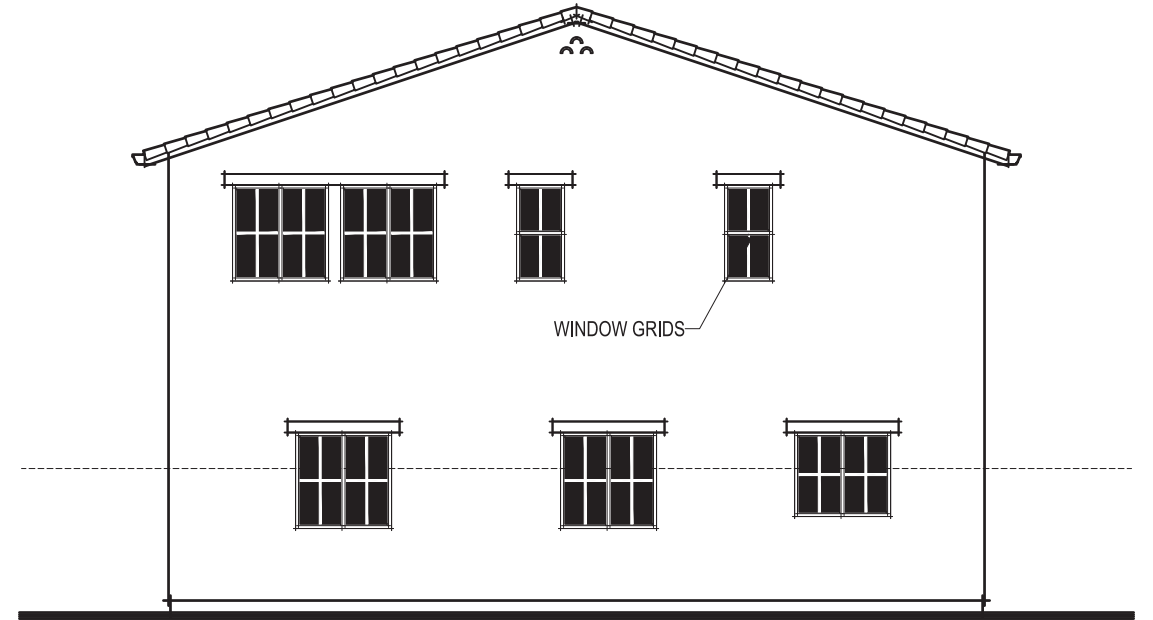
Home and community information, including pricing, included features, terms, availability and amenities, are subject to change at any time without notice or obligation. Drawings, renderings, square footages, floor plans, elevations, features, colors and sizes are approximate and for illustration purposes only and will vary from the homes as built. Not all features available in all plans. Options and upgrades are available at an additional cost and are subject to construction cut-off dates. See sales agent for complete details. D.R. Horton CA2, Inc.: CalBRE License #01239752; Contractor's License #750190.

MISSION ELEVATIONS  
1832-05

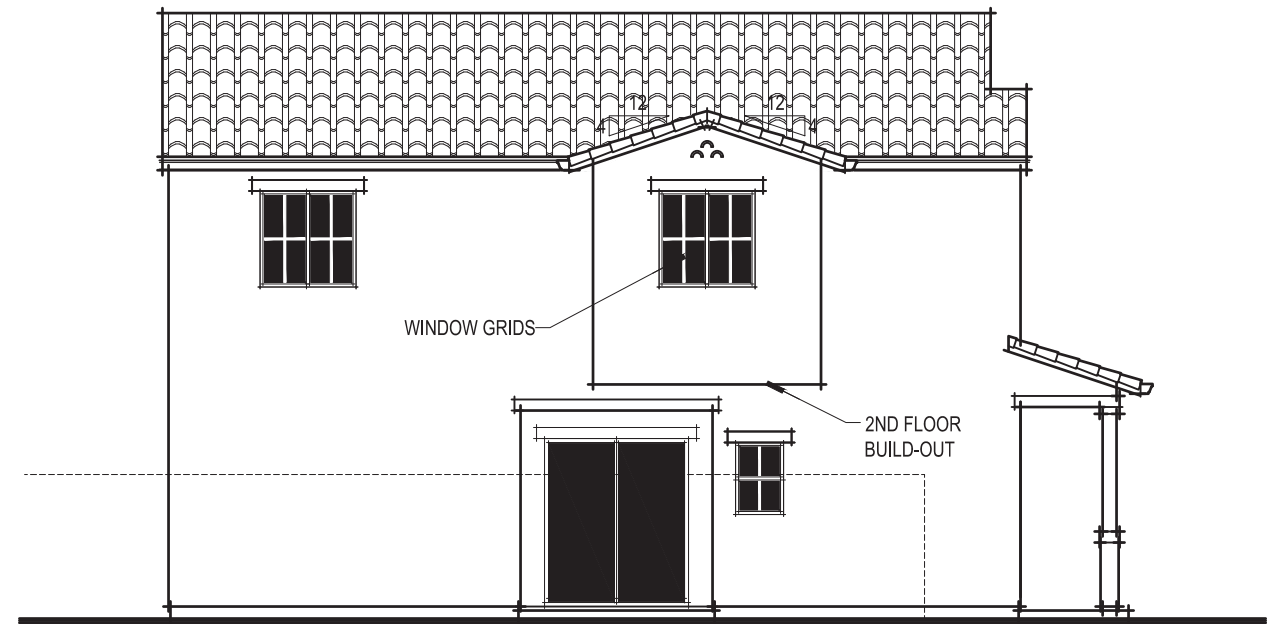
SDG Architects, Inc.  
3361 Walnut Blvd, Suite 120  
Brentwood, CA 94513  
925.634.7000 | sdgarchitectinc.com

SDG  
architects

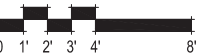
# Exhibit D



MISSION ENHANCED REAR ELEVATION



MISSION ENHANCED LEFT ELEVATION

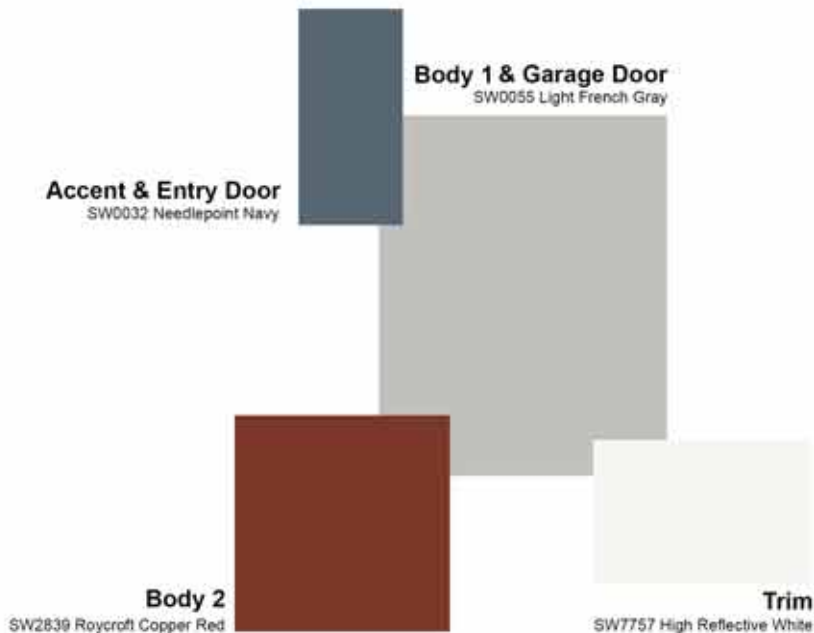


MISSION ENHANCED ELEVATIONS  
1832-05E

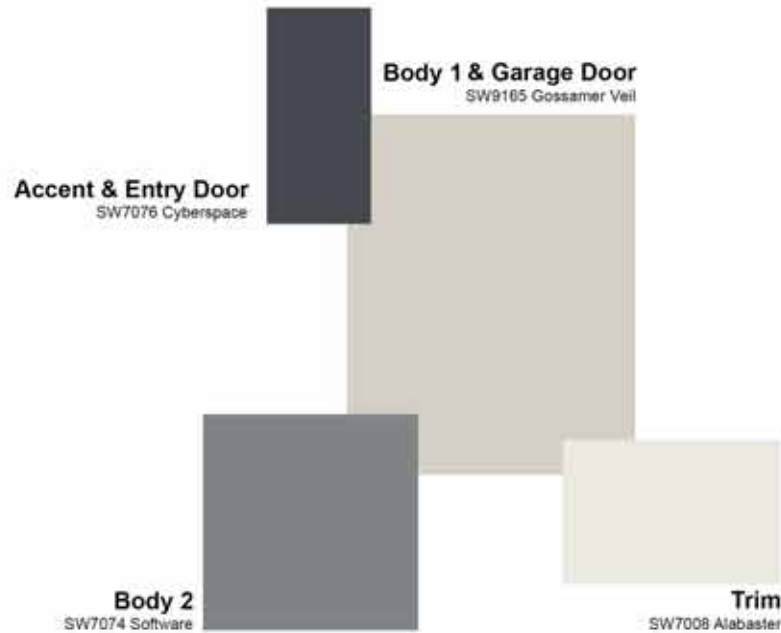
372.173 Isles(Fiddymnt F-6C1)  
Roseville, CA  
August 18, 2021

# Exhibit D

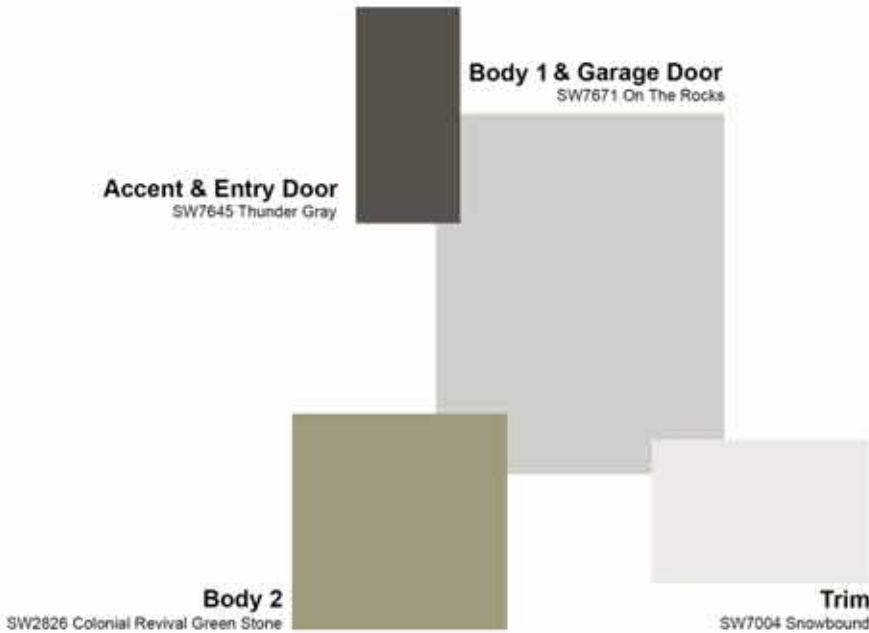
## SCHEME 1 - FARMHOUSE



## SCHEME 2 - FARMHOUSE



## SCHEME 3 - FARMHOUSE



*Note: All colors and textures are representative samples only, pending verification of actual material suppliers and manufacturers for this particular project.*

372.173 Isles(Fiddymnt F-6C1)  
Roseville, CA  
August 18, 2021

**Express**  
HOMES  
a D.R. Horton Company

2260 DOUGLAS BLVD. SUITE 110  
ROSEVILLE, CA 95661  
916.297.4461

Home and community information, including pricing, included features, terms, availability and amenities, are subject to change at any time without notice or obligation. Drawings, renderings, square footages, floor plans, elevations, features, colors and sizes are approximate and for illustration purposes only and will vary from the homes as built. Not all features available in all plans. Options and upgrades are available at an additional cost and are subject to construction cut-off dates. See sales agent for complete details. D.R. Horton CA2, Inc.: CalBRE License #01239752; Contractor's License #750190.


FARMHOUSE COLOR SCHEMES  
CS-01

SDG Architects, Inc.  
3361 Walnut Blvd. Suite 120  
Brentwood, CA 94513  
925.634.7000 | sdgarchitectinc.com

# Exhibit D

## SCHEME 4 - CRAFTSMAN

**Roofing**  
EAGLE  
Bel Air  
4883  
Hillsborough Blend




**Body 1 & Garage Door**  
SW7051 Analytical Gray

**Accent & Entry Door**  
SW7027 Well-Bred Brown

**Body 2**  
SW7744 Zeus


**Trim**  
SW7046 Anonymous

**Stone Accent**  
Cultured Stone By BORAL  
Umber Creek Country LedgeStone



## SCHEME 5 - CRAFTSMAN

**Roofing**  
EAGLE  
Bel Air  
4671  
Village Blend




**Body 1 & Garage Door**  
SW7044 Amazing Gray

**Accent & Entry Door**  
SW0045 Antiquarian Brown

**Body 2**  
SW7522 Meadowlark


**Trim**  
SW7047 Porpoise

**Stone Accent**  
Cultured Stone By BORAL  
Chardonay Country LedgeStone



## SCHEME 6 - CRAFTSMAN

**Roofing**  
EAGLE  
Bel Air  
4883  
Hillsborough Blend




**Body 1 & Garage Door**  
SW7024 Functional Gray

**Accent & Entry Door**  
SW6146 Umber

**Body 2**  
SW7025 Backdrop

**Trim**  
SW7005 Pure White

**Stone Accent**  
Cultured Stone By BORAL  
Skyline Country LedgeStone



*Note: All colors and textures are representative samples only, pending verification of actual material suppliers and manufacturers for this particular project.*

372.173 Isles(Fiddyment F-6C1)  
Roseville, CA  
August 18, 2021

**Express HOMES**  
a D.R. Horton Company  
2260 DOUGLAS BLVD. SUITE 110  
ROSEVILLE, CA 95661  
916.297.4461

Home and community information, including pricing, included features, terms, availability and amenities, are subject to change at any time without notice or obligation. Drawings, renderings, square footages, floor plans, elevations, features, colors and sizes are approximate and for illustration purposes only and will vary from the homes as built. Not all features available in all plans. Options and upgrades are available at an additional cost and are subject to construction cut-off dates. See sales agent for complete details. D.R. Horton CA2, Inc.: CalBRE License #01239752; Contractor's License #750190.

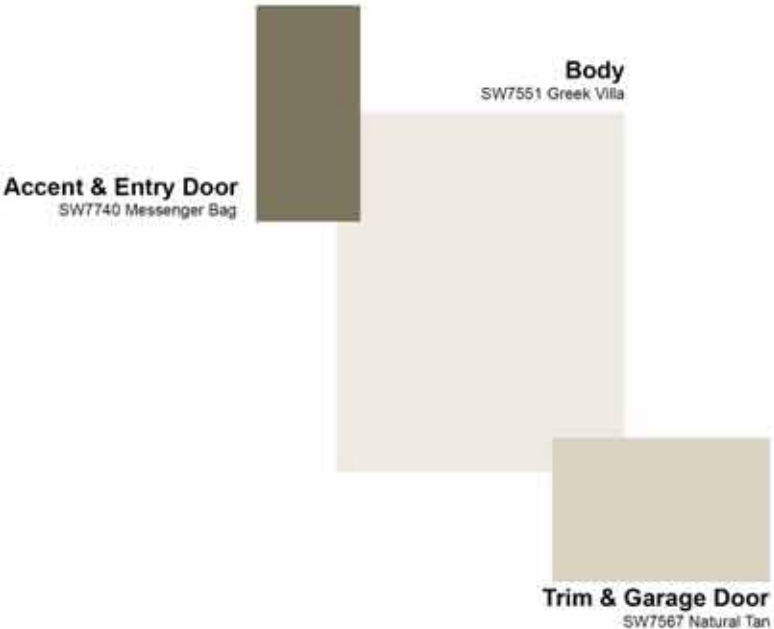
CRAFTSMAN COLOR SCHEMES  
CS-02

SDG Architects, Inc.  
3361 Walnut Blvd, Suite 120  
Brentwood, CA 94513  
925.634.7000 | sdgarchitectinc.com

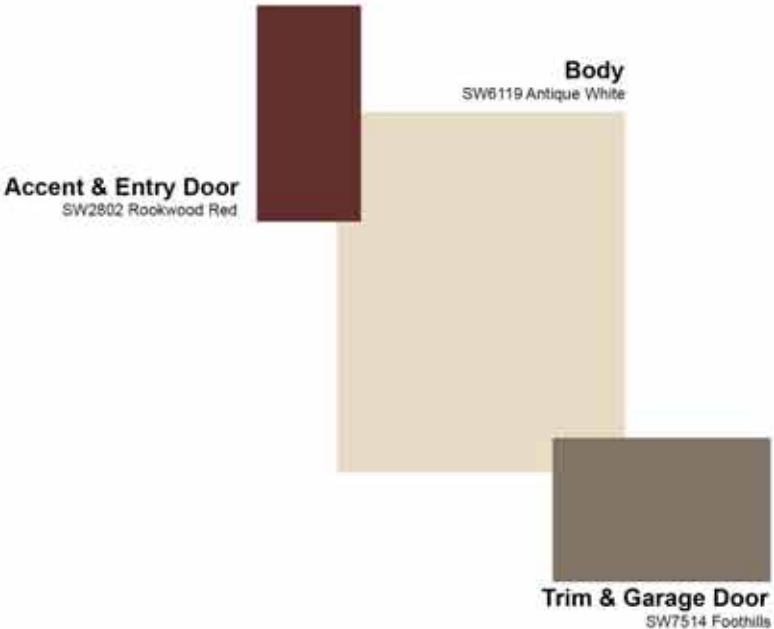


# Exhibit D

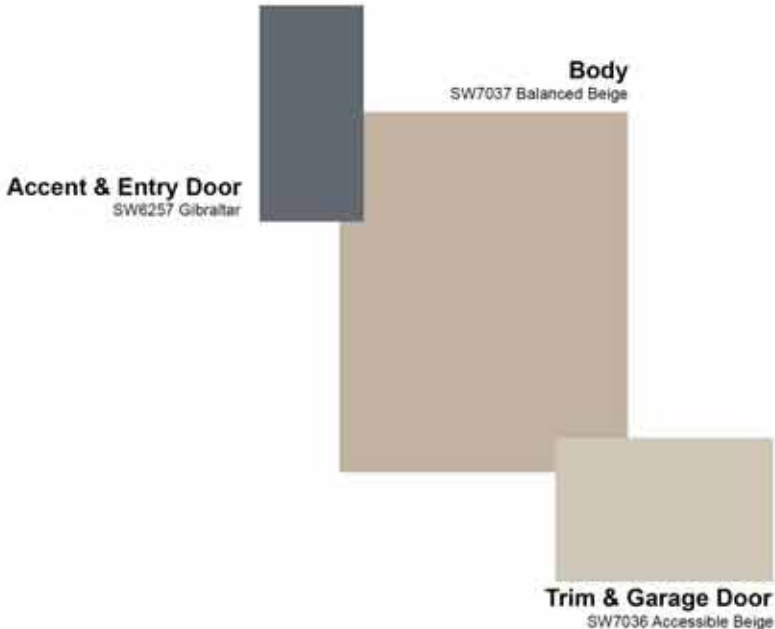
## SCHEME 7 - MISSION



## SCHEME 8 - MISSION



## SCHEME 9 - MISSION



*Note: All colors and textures are representative samples only, pending verification of actual material suppliers and manufacturers for this particular project.*

372.173 Isles(Fiddyment F-6C1)  
Roseville, CA  
August 18, 2021

**Express**  
HOMES  
a D.R. Horton Company

2260 DOUGLAS BLVD. SUITE 110  
ROSEVILLE, CA 95661  
916.297.4461

Home and community information, including pricing, included features, terms, availability and amenities, are subject to change at any time without notice or obligation. Drawings, renderings, square footages, floor plans, elevations, features, colors and sizes are approximate and for illustration purposes only and will vary from the homes as built. Not all features available in all plans. Options and upgrades are available at an additional cost and are subject to construction cut-off dates. See sales agent for complete details. D.R. Horton CA2, Inc.: CalBRE License #01239752; Contractor's License #750190.

MISSION COLOR SCHEMES  
CS-03

SDG Architects, Inc.  
3361 Walnut Blvd, Suite 120  
Brentwood, CA 94513  
925.634.7000 | sdgarchitectinc.com